



# GIMAP4 Monoclonal Antibody

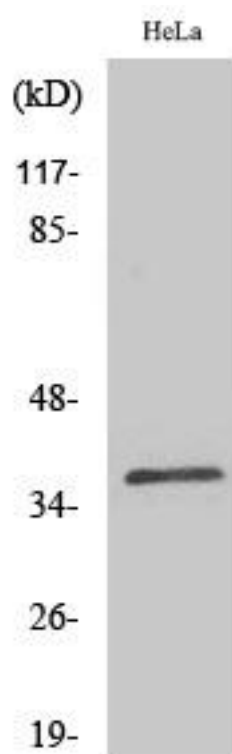
Catalog No	BYmab-16164
Isotype	IgG
Reactivity	Human;Rat;Mouse;
Applications	WB
Gene Name	GIMAP4
Protein Name	GTPase IMAP family member 4
Immunogen	The antiserum was produced against synthesized peptide derived from human GIMAP4. AA range:131-180
Specificity	GIMAP4 Monoclonal Antibody detects endogenous levels of GIMAP4 protein.
Formulation	Liquid in PBS containing 50% glycerol, 0.5% BSA and 0.02% sodium azide.
Source	Monoclonal, Mouse,IgG
Purification	The antibody was affinity-purified from mouse antiserum by affinity-chromatography using epitope-specific immunogen.
Dilution	WB 1:500-2000
Concentration	1 mg/ml
Purity	≥90%
Storage Stability	-20°C/1 year
Synonyms	GIMAP4; IAN1; IMAP4; MSTP062; GTPase IMAP family member 4; Immunity-associated nucleotide 1 protein; IAN-1; hIAN1; Immunity-associated protein 4
Observed Band	38kD
Cell Pathway	Cytoplasm, cytosol .
Tissue Specificity	Highly expressed in spleen and peripheral blood leukocytes that contain mostly T- and B-lymphocytes. Expressed specifically in resting T- and B-lymphocytes and expression significantly decreases during B- or T-lymphocyte activation. Expressed at lower levels in thymus, ovary, colon and small intestine.
Function	function:Exhibits intrinsic GTPase activity. Shows a higher affinity for GDP over GTP (about 12-fold higher), and binding shows an absolute requirement for magnesium.,similarity:Belongs to the IAN GTP-binding protein family.,tissue specificity:Highly expressed in spleen and peripheral blood leukocytes that contain mostly T- and B-lymphocytes. Expressed specifically in resting T- and B-lymphocytes and expression significantly decreases during B- or T-lymphocyte activation. Expressed at lower levels in thymus, ovary, colon and small intestine.,

Nanjing BYabscience technology Co.,Ltd



<b>Background</b>	This gene encodes a protein belonging to the GTP-binding superfamily and to the immuno-associated nucleotide (IAN) subfamily of nucleotide-binding proteins. The encoded protein of this gene may be negatively regulated by T-cell acute lymphocytic leukemia 1 (TAL1). In humans, the IAN subfamily genes are located in a cluster at 7q36.1. [provided by RefSeq, Jul 2008],
<b>matters needing attention</b>	Avoid repeated freezing and thawing!
<b>Usage suggestions</b>	This product can be used in immunological reaction related experiments. For more information, please consult technical personnel.

## Products Images



Western Blot analysis of various cells using GIMAP4 Monoclonal Antibody