



# GIMAP2 Monoclonal Antibody

<b>Catalog No</b>	BYmab-16163
<b>Isotype</b>	IgG
<b>Reactivity</b>	Human;Rat;Mouse;
<b>Applications</b>	WB
<b>Gene Name</b>	GIMAP2
<b>Protein Name</b>	GTPase IMAP family member 2
<b>Immunogen</b>	The antiserum was produced against synthesized peptide derived from human GIMAP2. AA range:201-250
<b>Specificity</b>	GIMAP2 Monoclonal Antibody detects endogenous levels of GIMAP2 protein.
<b>Formulation</b>	Liquid in PBS containing 50% glycerol, 0.5% BSA and 0.02% sodium azide.
<b>Source</b>	Monoclonal, Mouse,IgG
<b>Purification</b>	The antibody was affinity-purified from mouse antiserum by affinity-chromatography using epitope-specific immunogen.
<b>Dilution</b>	WB 1:500-2000
<b>Concentration</b>	1 mg/ml
<b>Purity</b>	≥90%
<b>Storage Stability</b>	-20°C/1 year
<b>Synonyms</b>	GIMAP2; IMAP2; GTPase IMAP family member 2; Immunity-associated protein 2; hIMAP2
<b>Observed Band</b>	38kD
<b>Cell Pathway</b>	Lipid droplet .
<b>Tissue Specificity</b>	Detected in T-cells.
<b>Function</b>	similarity:Belongs to the IAN GTP-binding protein family.,
<b>Background</b>	This gene encodes a protein belonging to the GTP-binding superfamily and to the immuno-associated nucleotide (IAN) subfamily of nucleotide-binding proteins. In humans, the IAN subfamily genes are located in a cluster at 7q36.1. [provided by RefSeq, Jul 2008],
<b>matters needing attention</b>	Avoid repeated freezing and thawing!

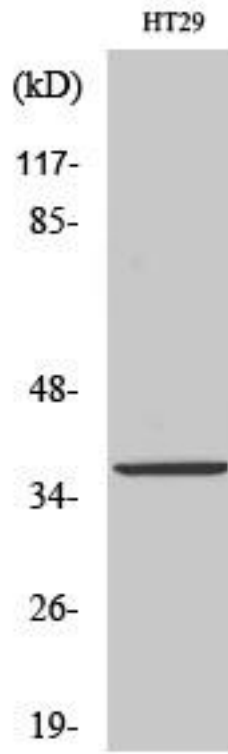
**Nanjing BYabscience technology Co.,Ltd**



### Usage suggestions

This product can be used in immunological reaction related experiments. For more information, please consult technical personnel.

## Products Images



Western Blot analysis of various cells using GIMAP2 Monoclonal Antibody

Nanjing BYabs science technology Co.,Ltd

网址: [www.njbybio.com](http://www.njbybio.com)

官方热线: 025-5229-8998

监督电话: 15950492658