



# EF-Tu Monoclonal Antibody

<b>Catalog No</b>	BYmab-16154
<b>Isotype</b>	IgG
<b>Reactivity</b>	Human;Mouse;Rat
<b>Applications</b>	WB
<b>Gene Name</b>	TUFM
<b>Protein Name</b>	Elongation factor Tu mitochondrial
<b>Immunogen</b>	The antiserum was produced against synthesized peptide derived from human TUFM. AA range:301-350
<b>Specificity</b>	EF-Tu Monoclonal Antibody detects endogenous levels of EF-Tu protein.
<b>Formulation</b>	Liquid in PBS containing 50% glycerol, 0.5% BSA and 0.02% sodium azide.
<b>Source</b>	Monoclonal, Mouse,IgG
<b>Purification</b>	The antibody was affinity-purified from mouse antiserum by affinity-chromatography using epitope-specific immunogen.
<b>Dilution</b>	WB 1:500-2000
<b>Concentration</b>	1 mg/ml
<b>Purity</b>	≥90%
<b>Storage Stability</b>	-20°C/1 year
<b>Synonyms</b>	TUFM; Elongation factor Tu; mitochondrial; EF-Tu; P43
<b>Observed Band</b>	50kD
<b>Cell Pathway</b>	Mitochondrion .
<b>Tissue Specificity</b>	Brain,Cajal-Retzius cell,Heart,Kidney,Liver,Lung,Placenta,P
<b>Function</b>	disease:Defects in TUFM are the cause of combined oxidative phosphorylation deficiency type 4 (COXPD4) [MIM:610678]. COXPD4 is characterized by neonatal lactic acidosis, rapidly progressive encephalopathy, severely decreased mitochondrial protein synthesis, and combined deficiency of mtDNA-related mitochondrial respiratory chain complexes.,function:This protein promotes the GTP-dependent binding of aminoacyl-tRNA to the A-site of ribosomes during protein biosynthesis.,similarity:Belongs to the GTP-binding elongation factor family. EF-Tu/EF-1A subfamily.,
<b>Background</b>	This gene encodes a protein which participates in protein translation in mitochondria. Mutations in this gene have been associated with combined

**Nanjing BYabscience technology Co.,Ltd**



oxidative phosphorylation deficiency resulting in lactic acidosis and fatal encephalopathy. A pseudogene has been identified on chromosome 17. [provided by RefSeq, Jul 2008],

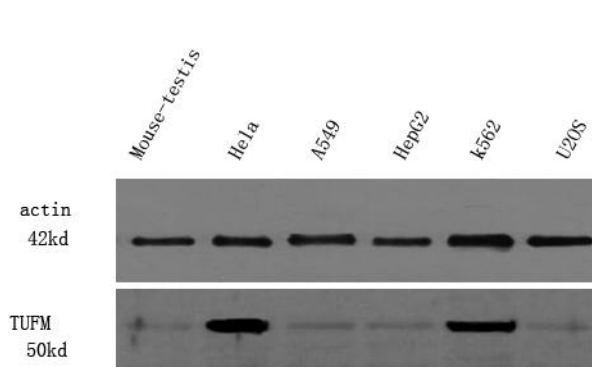
**matters needing attention**

Avoid repeated freezing and thawing!

**Usage suggestions**

This product can be used in immunological reaction related experiments. For more information, please consult technical personnel.

## Products Images



Western Blot analysis of various cells using EF-Tu Monoclonal Antibody