



Di-Ras1 Monoclonal Antibody

Catalog No	BYmab-16151
Isotype	IgG
Reactivity	Human;Rat;Mouse;
Applications	WB
Gene Name	DIRAS1
Protein Name	GTP-binding protein Di-Ras1
Immunogen	The antiserum was produced against synthesized peptide derived from human DIRA1. AA range:149-198
Specificity	Di-Ras1 Monoclonal Antibody detects endogenous levels of Di-Ras1 protein.
Formulation	Liquid in PBS containing 50% glycerol, 0.5% BSA and 0.02% sodium azide.
Source	Monoclonal, Mouse,IgG
Purification	The antibody was affinity-purified from mouse antiserum by affinity-chromatography using epitope-specific immunogen.
Dilution	WB 1:500-2000
Concentration	1 mg/ml
Purity	≥90%
Storage Stability	-20°C/1 year
Synonyms	DIRAS1; GBTS1; RIG; GTP-binding protein Di-Ras1; Distinct subgroup of the Ras family member 1; Ras-related inhibitor of cell growth; Rig; Small GTP-binding tumor suppressor 1
Observed Band	22kD
Cell Pathway	Cell membrane ; Lipid-anchor ; Cytoplasmic side .
Tissue Specificity	Highly expressed in heart and brain.
Function	function:Displays low GTPase activity and exist predominantly in the GTP-bound form.,similarity:Belongs to the small GTPase superfamily. Di-Ras family.,tissue specificity:Highly expressed in heart and brain.,
Background	DIRAS1 belongs to a distinct branch of the functionally diverse Ras (see HRAS; MIM 190020) superfamily of monomeric GTPases.[supplied by OMIM, Apr 2004],
matters needing attention	Avoid repeated freezing and thawing!

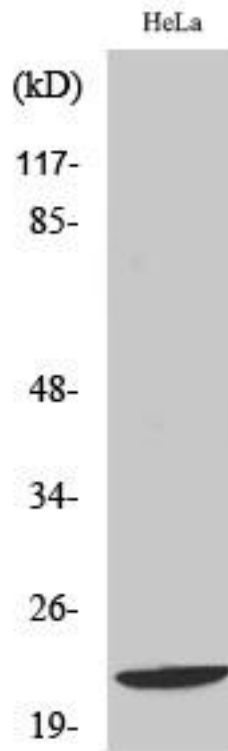
Nanjing BYabscience technology Co.,Ltd



Usage suggestions

This product can be used in immunological reaction related experiments. For more information, please consult technical personnel.

Products Images



Western Blot analysis of various cells using Di-Ras1 Monoclonal Antibody