



CCP2 Monoclonal Antibody

Catalog No	BYmab-16146
Isotype	IgG
Reactivity	Human;Mouse
Applications	WB
Gene Name	AGBL2
Protein Name	Cytosolic carboxypeptidase 2
Immunogen	The antiserum was produced against synthesized peptide derived from human CBCP2. AA range:731-780
Specificity	CCP2 Monoclonal Antibody detects endogenous levels of CCP2 protein.
Formulation	Liquid in PBS containing 50% glycerol, 0.5% BSA and 0.02% sodium azide.
Source	Monoclonal, Mouse,IgG
Purification	The antibody was affinity-purified from mouse antiserum by affinity-chromatography using epitope-specific immunogen.
Dilution	WB 1:500-2000
Concentration	1 mg/ml
Purity	≥90%
Storage Stability	-20°C/1 year
Synonyms	AGBL2; CCP2; Cytosolic carboxypeptidase 2; ATP/GTP-binding protein-like 2
Observed Band	104kD
Cell Pathway	Cytoplasm, cytosol . Cytoplasm, cytoskeleton, microtubule organizing center, centrosome, centriole . Cytoplasm, cytoskeleton, cilium basal body . Colocalizes with gamma-tubulin in the centrioles and with glutamylated tubulin in the basal bodies of ciliated cells. .
Tissue Specificity	Lung,Testis,
Function	cofactor:Binds 1 zinc ion per subunit.,function:May play a role in the processing of tubulin.,sequence caution:Translated as Lys.,similarity:Belongs to the peptidase M14 family.,
Background	cofactor:Binds 1 zinc ion per subunit.,function:May play a role in the processing of tubulin.,sequence caution:Translated as Lys.,similarity:Belongs to the peptidase M14 family.,

Nanjing BYabscience technology Co.,Ltd



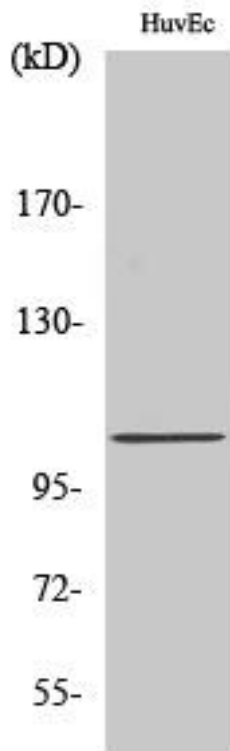
matters needing attention

Avoid repeated freezing and thawing!

Usage suggestions

This product can be used in immunological reaction related experiments. For more information, please consult technical personnel.

Products Images



Western Blot analysis of various cells using CCP2 Monoclonal Antibody