



# ARHGEF10 Monoclonal Antibody

Catalog No	BYmab-16138
Isotype	IgG
Reactivity	Human;Monkey
Applications	WB
Gene Name	ARHGEF10
Protein Name	Rho guanine nucleotide exchange factor 10
Immunogen	The antiserum was produced against synthesized peptide derived from human ARHGEF10. AA range:339-388
Specificity	ARHGEF10 Monoclonal Antibody detects endogenous levels of ARHGEF10 protein.
Formulation	Liquid in PBS containing 50% glycerol, 0.5% BSA and 0.02% sodium azide.
Source	Monoclonal, Mouse,IgG
Purification	The antibody was affinity-purified from mouse antiserum by affinity-chromatography using epitope-specific immunogen.
Dilution	WB 1:500-2000
Concentration	1 mg/ml
Purity	≥90%
Storage Stability	-20°C/1 year
Synonyms	ARHGEF10; KIAA0294; Rho guanine nucleotide exchange factor 10
Observed Band	152kD
Cell Pathway	centrosome,cytosol,
Tissue Specificity	Amygdala,Brain,Duodenum,Prostate,Testis,Uterus,
Function	disease:Defects in ARHGEF10 are the cause of slowed nerve conduction velocity (SNCV) [MIM:608236]. Affected individuals present a reduction in nerve conduction velocities without any clinical signs of peripheral or central nervous system dysfunction. SNCV inheritance is autosomal dominant.,function:May play a role in developmental myelination of peripheral nerves.,sequence caution:Cloning artifact.,sequence caution:Translated as Lys.,similarity:Contains 1 DH (DBL-homology) domain.,
Background	This gene encodes a Rho guanine nucleotide exchange factor (GEF). Rho GEFs regulate the activity of small Rho GTPases by stimulating the exchange of guanine diphosphate (GDP) for guanine triphosphate (GTP) and may play a role

Nanjing BYabscience technology Co.,Ltd



in neural morphogenesis. Mutations in this gene are associated with slowed nerve conduction velocity (SNCV). Alternative splicing results in multiple transcript variants. [provided by RefSeq, Apr 2015],

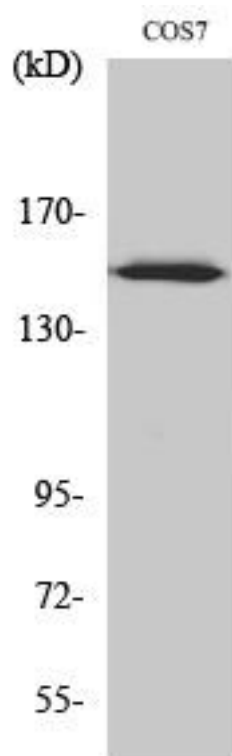
**matters needing attention**

Avoid repeated freezing and thawing!

**Usage suggestions**

This product can be used in immunological reaction related experiments. For more information, please consult technical personnel.

## Products Images



Western Blot analysis of various cells using ARHGEF10 Monoclonal Antibody