



# CCL17 Monoclonal Antibody

<b>Catalog No</b>	BYmab-16094
<b>Isotype</b>	IgG
<b>Reactivity</b>	Human;Rat;Mouse;
<b>Applications</b>	WB
<b>Gene Name</b>	CCL17 SCYA17 TARC
<b>Protein Name</b>	CCL17
<b>Immunogen</b>	Synthesized peptide derived from human CCL17 AA range: 21-70
<b>Specificity</b>	This antibody detects endogenous levels of human CCL17
<b>Formulation</b>	Liquid in PBS containing 50% glycerol, 0.5% BSA and 0.02% sodium azide.
<b>Source</b>	Monoclonal, Mouse,IgG
<b>Purification</b>	The antibody was affinity-purified from mouse antiserum by affinity-chromatography using epitope-specific immunogen.
<b>Dilution</b>	WB 1:500-2000
<b>Concentration</b>	1 mg/ml
<b>Purity</b>	≥90%
<b>Storage Stability</b>	-20°C/1 year
<b>Synonyms</b>	C-C motif chemokine 17 (CC chemokine TARC;Small-inducible cytokine A17;Thymus and activation-regulated chemokine)
<b>Observed Band</b>	10kD
<b>Cell Pathway</b>	Secreted.
<b>Tissue Specificity</b>	Expressed at high levels in thymus and at low levels in the lung, colon and small intestine.
<b>Function</b>	caution:Was originally (PubMed:9521068) thought to be a ligand for CCR8.,function:Chemotactic factor for T-lymphocytes but not monocytes or granulocytes. May play a role in T-cell development in thymus and in trafficking and activation of mature T-cells. Binds to CCR4.,induction:By phytohemagglutinin (PHA) in the peripheral blood mononuclear cells and by cytokines in monocytes.,online information:CCL17 entry,similarity:Belongs to the intercrine beta (chemokine CC) family.,tissue specificity:Expressed at high levels in thymus and at low levels in the lung, colon and small intestine.,
<b>Background</b>	This antimicrobial gene is one of several Cys-Cys (CC) cytokine genes clustered on the q arm of chromosome 16. Cytokines are a family of secreted proteins

**Nanjing BYabscience technology Co.,Ltd**



involved in immunoregulatory and inflammatory processes. The CC cytokines are proteins characterized by two adjacent cysteines. The cytokine encoded by this gene displays chemotactic activity for T lymphocytes, but not monocytes or granulocytes. The product of this gene binds to chemokine receptors CCR4 and CCR8. This chemokine plays important roles in T cell development in thymus as well as in trafficking and activation of mature T cells. [provided by RefSeq, Sep 2014],

**matters needing attention**

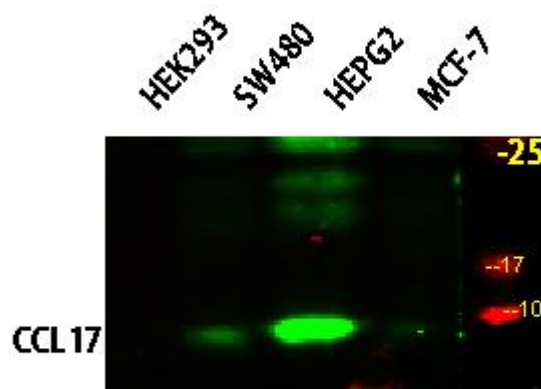
Avoid repeated freezing and thawing!

**Usage suggestions**

This product can be used in immunological reaction related experiments. For more information, please consult technical personnel.

## Products Images

Western Blot analysis of various cells using CCL17 Monoclonal Antibody



Nanjing BYabscience technology Co.,Ltd

网址: [www.njbybio.com](http://www.njbybio.com)

官方热线: 025-5229-8998

监督电话: 15950492658