



# IL-26 Monoclonal Antibody

<b>Catalog No</b>	BYmab-16076
<b>Isotype</b>	IgG
<b>Reactivity</b>	Human;Rat;Mouse;
<b>Applications</b>	WB
<b>Gene Name</b>	IL26
<b>Protein Name</b>	Interleukin-26
<b>Immunogen</b>	Synthesized peptide derived from Interleukin-26 at AA range: 21-70
<b>Specificity</b>	IL-26 Monoclonal Antibody detects endogenous levels of IL-26 protein.
<b>Formulation</b>	Liquid in PBS containing 50% glycerol, 0.5% BSA and 0.02% sodium azide.
<b>Source</b>	Monoclonal, Mouse,IgG
<b>Purification</b>	The antibody was affinity-purified from mouse antiserum by affinity-chromatography using epitope-specific immunogen.
<b>Dilution</b>	WB 1:500-2000
<b>Concentration</b>	1 mg/ml
<b>Purity</b>	≥90%
<b>Storage Stability</b>	-20°C/1 year
<b>Synonyms</b>	IL26; AK155; Interleukin-26; IL-26; Protein AK155
<b>Observed Band</b>	25kD
<b>Cell Pathway</b>	Secreted .
<b>Tissue Specificity</b>	Expressed in HVS transformed T-cells but not other T-cell lines or primary stimulated T-cells. Expressed in colonic T-cells including Th17 inflammatory T-cells; the expression is significantly increased in serum of patients with Crohn's disease (at protein level).
<b>Function</b>	induction:By Herpesvirus saimiri infection.,online information:Interleukin-26 entry,similarity:Belongs to the IL-10 family.,subunit:Homodimer.,tissue specificity:Expressed in HVS transformed T-cells but not other T-cell lines or primary stimulated T-cells.,
<b>Background</b>	This gene was identified by its overexpression specifically in herpesvirus saimiri-transformed T cells. The encoded protein is a member of the IL10 family of cytokines. It is a secreted protein and may function as a homodimer. This protein is thought to contribute to the transformed phenotype of T cells after infection by herpesvirus saimiri. [provided by RefSeq, Jul 2008],

**Nanjing BYabscience technology Co.,Ltd**



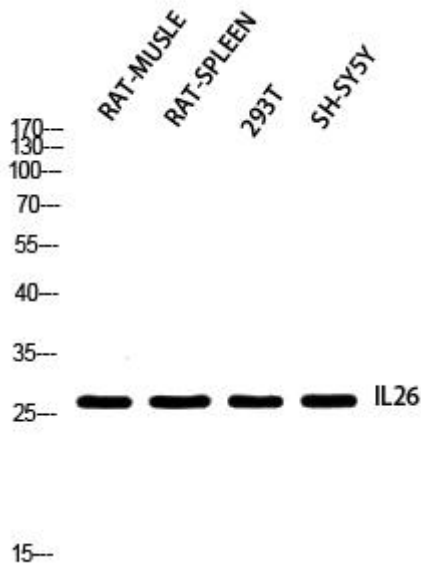
**matters needing attention**

Avoid repeated freezing and thawing!

**Usage suggestions**

This product can be used in immunological reaction related experiments. For more information, please consult technical personnel.

## Products Images



Western Blot analysis of various cells using IL-26 Monoclonal Antibody