



SCGF Monoclonal Antibody

Catalog No	BYmab-16072
Isotype	IgG
Reactivity	Human;Mouse
Applications	WB
Gene Name	CLEC11A
Protein Name	C-type lectin domain family 11 member A
Immunogen	The antiserum was produced against synthesized peptide derived from the N-terminal region of human CLEC11A. AA range:1-50
Specificity	SCGF Monoclonal Antibody detects endogenous levels of SCGF protein.
Formulation	Liquid in PBS containing 50% glycerol, 0.5% BSA and 0.02% sodium azide.
Source	Monoclonal, Mouse,IgG
Purification	The antibody was affinity-purified from mouse antiserum by affinity-chromatography using epitope-specific immunogen.
Dilution	WB 1:500-2000
Concentration	1 mg/ml
Purity	≥90%
Storage Stability	-20°C/1 year
Synonyms	CLEC11A; CLECSF3; LSLCL; SCGF; C-type lectin domain family 11 member A; C-type lectin superfamily member 3; Lymphocyte secreted C-type lectin; Stem cell growth factor; p47
Observed Band	30kD
Cell Pathway	Cytoplasm . Secreted .
Tissue Specificity	Expressed in skeletal tissues including bone marrow, chondrocytes, primary ossification center-associated cells, the perichondrium and periosteum. Lower levels of expression were detected in spleen, thymus, appendix and fetal liver.
Function	developmental stage:In the bone marrow, expression is limited to immature neutrophils. Expression was not detected in circulating mature neutrophils.,function:Stimulates the proliferation and differentiation of hematopoietic precursor cells from various lineages, including erythrocytes, lymphocytes, granulocytes and macrophages. Acts synergistically with other cytokines, including IL-3, GCSF, GMCSF and FLT3 ligand. Suppresses SCF-stimulated erythrocyte proliferation.,online information:Stem cell growth factor,PTM:O-glycosylated. Probably sulfated on the

Nanjing BYabscience technology Co.,Ltd



O-glycans.,similarity:Contains 1 C-type lectin domain.,tissue specificity:Expressed in skeletal tissues including bone marrow, chondrocytes, primary ossification center-associated cells, the perichondrium and periosteum. Lower levels of expression were detected in spleen, thymus, appendix and fetal liver.,

Background

This gene encodes a member of the C-type lectin superfamily. The encoded protein is a secreted sulfated glycoprotein and functions as a growth factor for primitive hematopoietic progenitor cells. An alternative splice variant has been described but its biological nature has not been determined. [provided by RefSeq, Jul 2008],

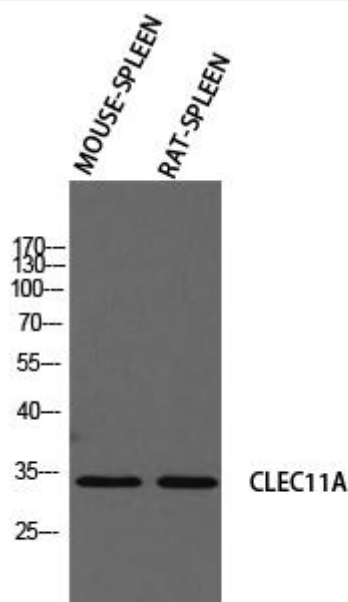
matters needing attention

Avoid repeated freezing and thawing!

Usage suggestions

This product can be used in immunological reaction related experiments. For more information, please consult technical personnel.

Products Images



Western Blot analysis of various cells using SCGF Monoclonal Antibody