



# Epigen Monoclonal Antibody

<b>Catalog No</b>	BYmab-16069
<b>Isotype</b>	IgG
<b>Reactivity</b>	Human;Rat;Mouse;
<b>Applications</b>	WB
<b>Gene Name</b>	EPGN
<b>Protein Name</b>	Epigen
<b>Immunogen</b>	The antiserum was produced against synthesized peptide derived from the Internal region of human EPGN. AA range:11-60
<b>Specificity</b>	Epigen Monoclonal Antibody detects endogenous levels of Epigen protein.
<b>Formulation</b>	Liquid in PBS containing 50% glycerol, 0.5% BSA and 0.02% sodium azide.
<b>Source</b>	Monoclonal, Mouse,IgG
<b>Purification</b>	The antibody was affinity-purified from mouse antiserum by affinity-chromatography using epitope-specific immunogen.
<b>Dilution</b>	WB 1:500-2000
<b>Concentration</b>	1 mg/ml
<b>Purity</b>	≥90%
<b>Storage Stability</b>	-20°C/1 year
<b>Synonyms</b>	EPGN; Epigen; Epithelial mitogen; EPG
<b>Observed Band</b>	17kD
<b>Cell Pathway</b>	[Isoform 1]: Membrane ; Single-pass type I membrane protein .; [Isoform 2]: Membrane ; Single-pass type I membrane protein .; [Isoform 3]: Secreted .; [Isoform 4]: Secreted .; [Isoform 5]: Secreted .; [Isoform 6]: Secreted .
<b>Tissue Specificity</b>	
<b>Function</b>	function:Promotes the growth of epithelial cells. May stimulate the phosphorylation of EGFR and mitogen-activated protein kinases.,similarity:Contains 1 EGF-like domain.,
<b>Background</b>	The protein encoded by this gene is a member of the epidermal growth factor family. Members of this family are ligands for the epidermal growth factor receptor and play a role in cell survival, proliferation and migration. This protein has been reported to have high mitogenic activity but low affinity for its receptor. Expression of this transcript and protein have been reported in cancer specimens of the breast, bladder, and prostate. Alternative splicing results in multiple transcript

**Nanjing BYabscience technology Co.,Ltd**



variants. [provided by RefSeq, Aug 2012],

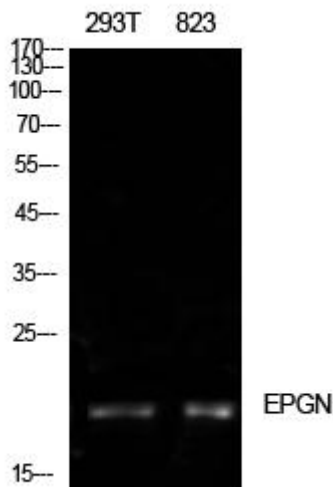
**matters needing attention**

Avoid repeated freezing and thawing!

**Usage suggestions**

This product can be used in immunological reaction related experiments. For more information, please consult technical personnel.

## Products Images



Western Blot analysis of various cells using Epigen Monoclonal Antibody