



FGF-8 Monoclonal Antibody

Catalog No	BYmab-16036
Isotype	IgG
Reactivity	Human;Mouse;Rat
Applications	WB
Gene Name	FGF8
Protein Name	Fibroblast growth factor 8
Immunogen	The antiserum was produced against synthesized peptide derived from the Internal region of human FGF8. AA range:141-190
Specificity	FGF-8 Monoclonal Antibody detects endogenous levels of FGF-8 protein.
Formulation	Liquid in PBS containing 50% glycerol, 0.5% BSA and 0.02% sodium azide.
Source	Monoclonal, Mouse,IgG
Purification	The antibody was affinity-purified from mouse antiserum by affinity-chromatography using epitope-specific immunogen.
Dilution	WB 1:500-2000
Concentration	1 mg/ml
Purity	≥90%
Storage Stability	-20°C/1 year
Synonyms	FGF8; AIGF; Fibroblast growth factor 8; FGF-8; Androgen-induced growth factor; AIGF; Heparin-binding growth factor 8; HBGF-8
Observed Band	26kD
Cell Pathway	Secreted.
Tissue Specificity	Oesophageal carcinoma,Placenta,Prostate,
Function	alternative products:Additional isoforms seem to exist,developmental stage:In adults expression is restricted to the gonads.,disease:Defects in FGF8 are a cause of idiopathic hypogonadotropic hypogonadism (IHH) [MIM:146110]. IHH is defined as a deficiency of the pituitary secretion of follicle-stimulating hormone and luteinizing hormone, which results in the impairment of pubertal maturation and of reproductive function.,disease:Defects in FGF8 are the cause of Kallmann syndrome type 6 (KAL6) [MIM:612702]. Kallmann syndrome is a disorder that associates hypogonadotropic hypogonadism and anosmia. Anosmia or hyposmia is related to the absence or hypoplasia of the olfactory bulbs and tracts. Hypogonadism is due to deficiency in gonadotropin-releasing hormone and

Nanjing BYabscience technology Co.,Ltd



probably results from a failure of embryonic migration of gonadotropin-releasing hormone-synthesizing neurons. In some patients of

Background

The protein encoded by this gene is a member of the fibroblast growth factor (FGF) family. FGF family members possess broad mitogenic and cell survival activities, and are involved in a variety of biological processes, including embryonic development, cell growth, morphogenesis, tissue repair, tumor growth and invasion. This protein is known to be a factor that supports androgen and anchorage independent growth of mammary tumor cells. Overexpression of this gene has been shown to increase tumor growth and angiogenesis. The adult expression of this gene is restricted to testes and ovaries. Temporal and spatial pattern of this gene expression suggests its function as an embryonic epithelial factor. Studies of the mouse and chick homologs revealed roles in midbrain and limb development, organogenesis, embryo gastrulation and left-right axis determination. The alternative splicing of this gene re

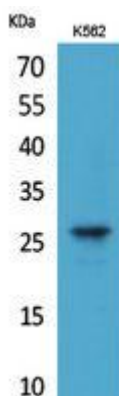
matters needing attention

Avoid repeated freezing and thawing!

Usage suggestions

This product can be used in immunological reaction related experiments. For more information, please consult technical personnel.

Products Images



Western Blot analysis of various cells using FGF-8 Monoclonal Antibody