



IFN- ω Monoclonal Antibody

Catalog No	BYmab-16035
Isotype	IgG
Reactivity	Human;Rat;Mouse;
Applications	WB
Gene Name	IFNW1
Protein Name	Interferon omega-1
Immunogen	The antiserum was produced against synthesized peptide derived from the C-terminal region of human IFNW1. AA range:146-195
Specificity	IFN- ω Monoclonal Antibody detects endogenous levels of IFN- ω protein.
Formulation	Liquid in PBS containing 50% glycerol, 0.5% BSA and 0.02% sodium azide.
Source	Monoclonal, Mouse,IgG
Purification	The antibody was affinity-purified from mouse antiserum by affinity-chromatography using epitope-specific immunogen.
Dilution	WB 1:500-2000
Concentration	1 mg/ml
Purity	≥90%
Storage Stability	-20°C/1 year
Synonyms	IFNW1; Interferon omega-1; Interferon alpha-II-1
Observed Band	22kD
Cell Pathway	Secreted.
Tissue Specificity	Leukocyte,Liver,
Function	similarity:Belongs to the alpha/beta interferon family.,
Background	The protein encoded by this gene is an interferon and possesses antiviral activity. The encoded protein binds to the interferon alpha/beta receptor but not to the interferon gamma receptor. This intronless gene has several pseudogenes spread throughout the genome. [provided by RefSeq, Nov 2015],
matters needing attention	Avoid repeated freezing and thawing!

Nanjing BYabscience technology Co.,Ltd

网址: www.njbybio.com

官方热线: 025-5229-8998

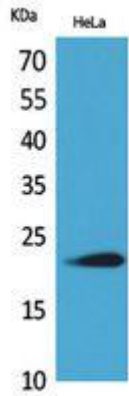
监督电话: 15950492658



Usage suggestions

This product can be used in immunological reaction related experiments. For more information, please consult technical personnel.

Products Images



Western Blot analysis of various cells using IFN- ω Monoclonal Antibody

Nanjing BYabs science technology Co.,Ltd

网址: www.njbybio.com

官方热线: 025-5229-8998

监督电话: 15950492658