



# Cerberus Monoclonal Antibody

Catalog No	BYmab-16030
Isotype	IgG
Reactivity	Human;Rat
Applications	WB
Gene Name	CER1
Protein Name	Cerberus
Immunogen	The antiserum was produced against synthesized peptide derived from the Internal region of human CER1. AA range:91-140
Specificity	Cerberus Monoclonal Antibody detects endogenous levels of Cerberus protein.
Formulation	Liquid in PBS containing 50% glycerol, 0.5% BSA and 0.02% sodium azide.
Source	Monoclonal, Mouse,IgG
Purification	The antibody was affinity-purified from mouse antiserum by affinity-chromatography using epitope-specific immunogen.
Dilution	WB 1:500-2000
Concentration	1 mg/ml
Purity	≥90%
Storage Stability	-20°C/1 year
Synonyms	CER1; DAND4; Cerberus; Cerberus-related protein; DAN domain family member 4
Observed Band	30kD
Cell Pathway	Secreted .
Tissue Specificity	Blood,PCR rescued clones,
Function	function:Cytokine that may play a role in anterior neural induction and somite formation during embryogenesis in part through a BMP-inhibitory mechanism. Can regulate Nodal signaling during gastrulation as well as the formation and patterning of the primitive streak.,PTM:N-glycosylated.,sequence caution:Translated as Ser.,similarity:Belongs to the DAN family.,similarity:Contains 1 CTCK (C-terminal cystine knot-like) domain.,subunit:Forms monomers and predominantly dimers.,
Background	This gene encodes a cytokine member of the cysteine knot superfamily, characterized by nine conserved cysteines and a cysteine knot region. The cerberus-related cytokines, together with Dan and DRM/Gremlin, represent a

Nanjing BYabscience technology Co.,Ltd



group of bone morphogenetic protein (BMP) antagonists that can bind directly to BMPs and inhibit their activity. [provided by RefSeq, Jul 2008],

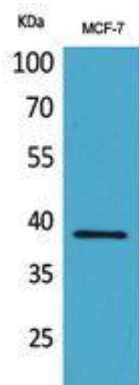
**matters needing attention**

Avoid repeated freezing and thawing!

**Usage suggestions**

This product can be used in immunological reaction related experiments. For more information, please consult technical personnel.

## Products Images



Western Blot analysis of various cells using Cerberus Monoclonal Antibody