



# Fractalkine Monoclonal Antibody

<b>Catalog No</b>	BYmab-16023
<b>Isotype</b>	IgG
<b>Reactivity</b>	Human;Rat;Mouse;
<b>Applications</b>	WB
<b>Gene Name</b>	CX3CL1
<b>Protein Name</b>	Fractalkine
<b>Immunogen</b>	The antiserum was produced against synthesized peptide derived from the Internal region of human CX3CL1. AA range:231-280
<b>Specificity</b>	Fractalkine Monoclonal Antibody detects endogenous levels of Fractalkine protein.
<b>Formulation</b>	Liquid in PBS containing 50% glycerol, 0.5% BSA and 0.02% sodium azide.
<b>Source</b>	Monoclonal, Mouse,IgG
<b>Purification</b>	The antibody was affinity-purified from mouse antiserum by affinity-chromatography using epitope-specific immunogen.
<b>Dilution</b>	WB 1:500-2000
<b>Concentration</b>	1 mg/ml
<b>Purity</b>	≥90%
<b>Storage Stability</b>	-20°C/1 year
<b>Synonyms</b>	CX3CL1; FKN; NTT; SCYD1; A-152E5.2; Fractalkine; C-X3-C motif chemokine 1; CX3C membrane-anchored chemokine; Neurotactin; Small-inducible cytokine D1
<b>Observed Band</b>	42kD
<b>Cell Pathway</b>	Cell membrane ; Single-pass type I membrane protein .; [Processed fractalkine]: Secreted .
<b>Tissue Specificity</b>	Expressed in the seminal plasma, endometrial fluid and follicular fluid (at protein level). Small intestine, colon, testis, prostate, heart, brain, lung, skeletal muscle, kidney and pancreas. Most abundant in the brain and heart.
<b>Function</b>	function:The soluble form is chemotactic for T-cells and monocytes, but not for neutrophils. The membrane-bound form promotes adhesion of those leukocytes to endothelial cells. May play a role in regulating leukocyte adhesion and migration processes at the endothelium. Binds to CX3CR1.,induction:By TNF and IL-1 in pulmonary endothelial cells and umbilical vein endothelial cells.,online information:CX3CL1 entry,PTM:A soluble short 95 kDa form may be released by proteolytic cleavage from the long membrane-anchored form.,similarity:Belongs to the intercrine delta family.,subunit:Monomer.,tissue specificity:Small intestine, colon, testis, prostate, heart, brain, lung, skeletal muscle, kidney and pancreas.,

**Nanjing BYabscience technology Co.,Ltd**



## Background

function: The soluble form is chemotactic for T-cells and monocytes, but not for neutrophils. The membrane-bound form promotes adhesion of those leukocytes to endothelial cells. May play a role in regulating leukocyte adhesion and migration processes at the endothelium. Binds to CX3CR1., induction: By TNF and IL-1 in pulmonary endothelial cells and umbilical vein endothelial cells., online information: CX3CL1 entry, PTM: A soluble short 95 kDa form may be released by proteolytic cleavage from the long membrane-anchored form., similarity: Belongs to the intercrine delta family., subunit: Monomer., tissue specificity: Small intestine, colon, testis, prostate, heart, brain, lung, skeletal muscle, kidney and pancreas.,

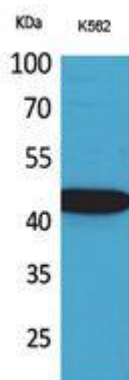
## matters needing attention

Avoid repeated freezing and thawing!

## Usage suggestions

This product can be used in immunological reaction related experiments. For more information, please consult technical personnel.

## Products Images



Western Blot analysis of various cells using Fractalkine Monoclonal Antibody