



IFN- ϵ Monoclonal Antibody

Catalog No	BYmab-16018
Isotype	IgG
Reactivity	Human;Rat;Mouse;
Applications	WB
Gene Name	IFNE
Protein Name	Interferon epsilon
Immunogen	The antiserum was produced against synthesized peptide derived from the C-terminal region of human IFNE. AA range:159-208
Specificity	IFN- ϵ Monoclonal Antibody detects endogenous levels of IFN- ϵ protein.
Formulation	Liquid in PBS containing 50% glycerol, 0.5% BSA and 0.02% sodium azide.
Source	Monoclonal, Mouse,IgG
Purification	The antibody was affinity-purified from mouse antiserum by affinity-chromatography using epitope-specific immunogen.
Dilution	WB 1:500-2000
Concentration	1 mg/ml
Purity	$\geq 90\%$
Storage Stability	-20°C/1 year
Synonyms	IFNE; IFNE1; Interferon epsilon; IFN-epsilon; Interferon epsilon-1
Observed Band	24kD
Cell Pathway	Secreted .
Tissue Specificity	Endometrium-specific.
Function	similarity:Belongs to the alpha/beta interferon family.,tissue specificity:Expressed in prostate cancer cell line PC-3, amnion-derived WISH cells, SK-MEL28 melanoma cells and Daudi cells and very weakly in MCF-7 human breast cancer cells. Not detected in Namalwa cells (Burkitt's lymphoma) or in Jurkat (T) cells.,
Background	similarity:Belongs to the alpha/beta interferon family.,tissue specificity:Expressed in prostate cancer cell line PC-3, amnion-derived WISH cells, SK-MEL28 melanoma cells and Daudi cells and very weakly in MCF-7 human breast cancer cells. Not detected in Namalwa cells (Burkitt's lymphoma) or in Jurkat (T) cells.,

Nanjing BYabscience technology Co.,Ltd

网址: www.njbybio.com

官方热线: 025-5229-8998

监督电话: 15950492658



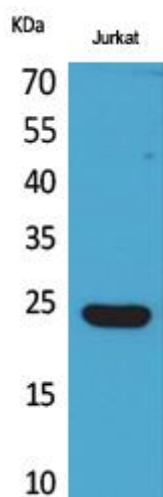
matters needing attention

Avoid repeated freezing and thawing!

Usage suggestions

This product can be used in immunological reaction related experiments. For more information, please consult technical personnel.

Products Images



Western Blot analysis of various cells using IFN- ϵ Monoclonal Antibody

Nanjing BYabs science technology Co.,Ltd

网址: www.njbybio.com

官方热线: 025-5229-8998

监督电话: 15950492658