



Osteoglycin Monoclonal Antibody

Catalog No	BYmab-16011
Isotype	IgG
Reactivity	Human;Mouse
Applications	WB
Gene Name	OGN
Protein Name	Mimecan
Immunogen	The antiserum was produced against synthesized peptide derived from the C-terminal region of human OGN. AA range:231-280
Specificity	Osteoglycin Monoclonal Antibody detects endogenous levels of Osteoglycin protein.
Formulation	Liquid in PBS containing 50% glycerol, 0.5% BSA and 0.02% sodium azide.
Source	Monoclonal, Mouse,IgG
Purification	The antibody was affinity-purified from mouse antiserum by affinity-chromatography using epitope-specific immunogen.
Dilution	WB 1:500-2000
Concentration	1 mg/ml
Purity	≥90%
Storage Stability	-20°C/1 year
Synonyms	OGN; OIF; SLRR3A; Mimecan; Osteoglycin; Osteoinductive factor; OIF
Observed Band	35kD
Cell Pathway	Secreted, extracellular space, extracellular matrix .
Tissue Specificity	Bone.
Function	function:Induces bone formation in conjunction with TGF-beta-1 or TGF-beta-2.,similarity:Belongs to the small leucine-rich proteoglycan (SLRP) family. Class III subfamily.,similarity:Contains 7 LRR (leucine-rich) repeats.,tissue specificity:Bone.,
Background	This gene encodes a member of the small leucine-rich proteoglycan (SLRP) family of proteins. The encoded protein induces ectopic bone formation in conjunction with transforming growth factor beta and may regulate osteoblast differentiation. High expression of the encoded protein may be associated with elevated heart left ventricular mass. Alternative splicing results in multiple transcript variants. [provided by RefSeq, Jan 2016],

Nanjing BYabscience technology Co.,Ltd



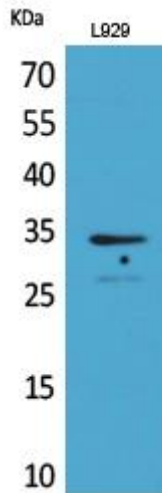
matters needing attention

Avoid repeated freezing and thawing!

Usage suggestions

This product can be used in immunological reaction related experiments. For more information, please consult technical personnel.

Products Images



Western Blot analysis of various cells using Osteoglycin Monoclonal Antibody

Nanjing BYabs science technology Co.,Ltd

网址: www.njbybio.com

官方热线: 025-5229-8998

监督电话: 15950492658