



MK Monoclonal Antibody

| | |
|---------------------------|--|
| Catalog No | BYmab-15998 |
| Isotype | IgG |
| Reactivity | Human;Rat |
| Applications | WB |
| Gene Name | MDK |
| Protein Name | Midkine |
| Immunogen | The antiserum was produced against synthesized peptide derived from the Internal region of human MDK. AA range:94-143 |
| Specificity | MK Monoclonal Antibody detects endogenous levels of MK protein. |
| Formulation | Liquid in PBS containing 50% glycerol, 0.5% BSA and 0.02% sodium azide. |
| Source | Monoclonal, Mouse,IgG |
| Purification | The antibody was affinity-purified from mouse antiserum by affinity-chromatography using epitope-specific immunogen. |
| Dilution | WB 1:500-2000 |
| Concentration | 1 mg/ml |
| Purity | ≥90% |
| Storage Stability | -20°C/1 year |
| Synonyms | MDK; MK1; NRG2; Midkine; MK; Amphiregulin-associated protein; ARAP; Midgestation and kidney protein; Neurite outgrowth-promoting factor 2; Neurite outgrowth-promoting protein |
| Observed Band | 18kD |
| Cell Pathway | Secreted. |
| Tissue Specificity | Expressed in various tumor cell lines. In insulinoma tissue predominantly expressed in precancerous lesions. |
| Function | function:Has heparin binding activity, and growth promoting activity. Involved in neointima formation after arterial injury, possibly by mediating leukocyte recruitment. Also involved in early fetal adrenal gland development.,induction:By heparin and retinoic acid.,similarity:Belongs to the pleiotrophin family.,subunit:Homodimer., |
| Background | This gene encodes a member of a small family of secreted growth factors that binds heparin and responds to retinoic acid. The encoded protein promotes cell growth, migration, and angiogenesis, in particular during tumorigenesis. This gene |

Nanjing BYabscience technology Co.,Ltd



has been targeted as a therapeutic for a variety of different disorders. Alternatively spliced transcript variants encoding multiple isoforms have been observed. [provided by RefSeq, Jul 2012],

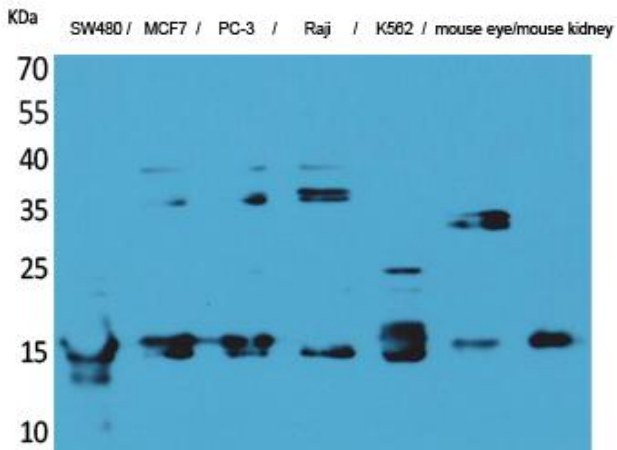
matters needing attention

Avoid repeated freezing and thawing!

Usage suggestions

This product can be used in immunological reaction related experiments. For more information, please consult technical personnel.

Products Images



Western Blot analysis of various cells using MK Monoclonal Antibody