



Ghrelin Monoclonal Antibody

Catalog No	BYmab-15918
Isotype	IgG
Reactivity	Human;Mouse;Rat
Applications	WB
Gene Name	GHRL
Protein Name	Appetite-regulating hormone
Immunogen	The antiserum was produced against synthesized peptide derived from human Ghrelin. AA range:47-96
Specificity	Ghrelin Monoclonal Antibody detects endogenous levels of Ghrelin protein.
Formulation	Liquid in PBS containing 50% glycerol, 0.5% BSA and 0.02% sodium azide.
Source	Monoclonal, Mouse,IgG
Purification	The antibody was affinity-purified from mouse antiserum by affinity-chromatography using epitope-specific immunogen.
Dilution	WB 1:500-2000
Concentration	1 mg/ml
Purity	≥90%
Storage Stability	-20°C/1 year
Synonyms	GHRL; MTLRP; Appetite-regulating hormone; Growth hormone secretagogue; Growth hormone-releasing peptide; Motilin-related peptide; Protein M46
Observed Band	13kD
Cell Pathway	Secreted.
Tissue Specificity	Highest level in stomach. All forms are found in serum as well. Other tissues compensate for the loss of ghrelin synthesis in the stomach following gastrectomy.
Function	function:Ghrelin is the ligand for growth hormone secretagogue receptor type 1 (GHSR). Induces the release of growth hormone from the pituitary. Has an appetite-stimulating effect, induces adiposity and stimulates gastric acid secretion. Involved in growth regulation.,function:Obestatin may be the ligand for GPR39. May have an appetite-reducing effect resulting in decreased food intake. May reduce gastric emptying activity and jejunal motility.,mass spectrometry:Ghrelin-27-C10, O-decanoylated form PubMed:12414809,mass spectrometry:Ghrelin-27-C8, O-octanoylated form PubMed:12414809,mass spectrometry:Ghrelin-28-C10, O-decanoylated form PubMed:12414809,mass

Nanjing BYabscience technology Co.,Ltd



spectrometry:Ghrelin-28-C10:1, O-decenoylated form PubMed:12414809,mass spectrometry:Ghrelin-28-C8, O-octanoylated form PubMed:12414809,online information:Ghrelin entry,online information:Gut feelings - Issue 66 of January 2006,PTM:Amida

Background

This gene encodes the ghrelin-obestatin preproprotein that is cleaved to yield two peptides, ghrelin and obestatin. Ghrelin is a powerful appetite stimulant and plays an important role in energy homeostasis. Its secretion is initiated when the stomach is empty, whereupon it binds to the growth hormone secretagogue receptor in the hypothalamus which results in the secretion of growth hormone (somatotropin). Ghrelin is thought to regulate multiple activities, including hunger, reward perception via the mesolimbic pathway, gastric acid secretion, gastrointestinal motility, and pancreatic glucose-stimulated insulin secretion. It was initially proposed that obestatin plays an opposing role to ghrelin by promoting satiety and thus decreasing food intake, but this action is still debated. Recent reports suggest multiple metabolic roles for obestatin, including regulating adipocyte function

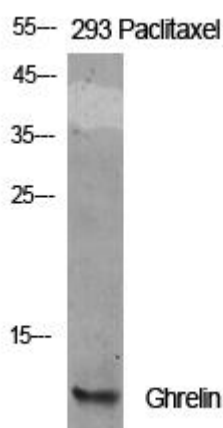
matters needing attention

Avoid repeated freezing and thawing!

Usage suggestions

This product can be used in immunological reaction related experiments. For more information, please consult technical personnel.

Products Images



Western Blot analysis of various cells using Ghrelin Monoclonal Antibody

Nanjing BYabscience technology Co.,Ltd

网址: www.njbybio.com

官方热线: 025-5229-8998

监督电话: 15950492658