



GDF-15 Monoclonal Antibody

Catalog No	BYmab-15914
Isotype	IgG
Reactivity	Human;Rat;Mouse;
Applications	WB
Gene Name	GDF15
Protein Name	Growth/differentiation factor 15
Immunogen	The antiserum was produced against synthesized peptide derived from human GDF15. AA range:31-80
Specificity	GDF-15 Monoclonal Antibody detects endogenous levels of GDF-15 protein.
Formulation	Liquid in PBS containing 50% glycerol, 0.5% BSA and 0.02% sodium azide.
Source	Monoclonal, Mouse,IgG
Purification	The antibody was affinity-purified from mouse antiserum by affinity-chromatography using epitope-specific immunogen.
Dilution	WB 1:500-2000
Concentration	1 mg/ml
Purity	≥90%
Storage Stability	-20°C/1 year
Synonyms	GDF15; MIC1; PDF; PLAB; PTGFB; Growth/differentiation factor 15; GDF-15; Macrophage inhibitory cytokine 1; MIC-1; NSAID-activated gene 1 protein; NAG-1; NSAID-regulated gene 1 protein; NRG-1; Placental TGF-beta; Placental bone morphogenetic
Observed Band	37kD
Cell Pathway	Secreted .
Tissue Specificity	Highly expressed in placenta, with lower levels in prostate and colon and some expression in kidney (PubMed:9348093). Detected in plasma (at protein level) (PubMed:28572090, PubMed:29046435).
Function	similarity:Belongs to the TGF-beta family.,subunit:Homodimer; disulfide-linked.,tissue specificity:Highly expressed in placenta, with lower levels in prostate and colon and some expression in kidney.,
Background	growth differentiation factor 15(GDF15) Homo sapiens This gene encodes a secreted ligand of the TGF-beta (transforming growth factor-beta) superfamily of

Nanjing BYabscience technology Co.,Ltd



proteins. Ligands of this family bind various TGF-beta receptors leading to recruitment and activation of SMAD family transcription factors that regulate gene expression. The encoded preproprotein is proteolytically processed to generate each subunit of the disulfide-linked homodimer. The protein is expressed in a broad range of cell types, acts as a pleiotropic cytokine and is involved in the stress response program of cells after cellular injury. Increased protein levels are associated with disease states such as tissue hypoxia, inflammation, acute injury and oxidative stress. [provided by RefSeq, Aug 2016],

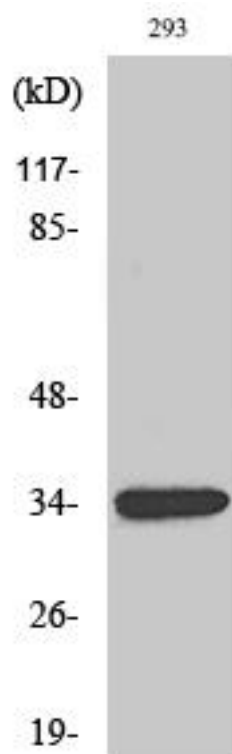
matters needing attention

Avoid repeated freezing and thawing!

Usage suggestions

This product can be used in immunological reaction related experiments. For more information, please consult technical personnel.

Products Images



Western Blot analysis of various cells using GDF-15 Monoclonal Antibody