



FGF-22 Monoclonal Antibody

Catalog No	BYmab-15908
Isotype	IgG
Reactivity	Human;Mouse;Rat
Applications	WB
Gene Name	FGF22
Protein Name	Fibroblast growth factor 22
Immunogen	The antiserum was produced against synthesized peptide derived from human FGF22. AA range:71-120
Specificity	FGF-22 Monoclonal Antibody detects endogenous levels of FGF-22 protein.
Formulation	Liquid in PBS containing 50% glycerol, 0.5% BSA and 0.02% sodium azide.
Source	Monoclonal, Mouse,IgG
Purification	The antibody was affinity-purified from mouse antiserum by affinity-chromatography using epitope-specific immunogen.
Dilution	WB 1:500-2000
Concentration	1 mg/ml
Purity	≥90%
Storage Stability	-20°C/1 year
Synonyms	FGF22; Fibroblast growth factor 22; FGF-22
Observed Band	20kD
Cell Pathway	Secreted .
Tissue Specificity	Placenta,
Function	function:May be involved in hair development.,similarity:Belongs to the heparin-binding growth factors family.,subunit:Interacts with FGFBP1.,
Background	The protein encoded by this gene is a member of the fibroblast growth factor (FGF) family. FGF family members possess broad mitogenic and cell survival activities and are involved in a variety of biological processes including embryonic development, cell growth, morphogenesis, tissue repair, tumor growth and invasion. The mouse homolog of this gene was found to be preferentially expressed in the inner root sheath of the hair follicle, which suggested a role in hair development. Alternative splicing results in multiple transcript variants. [provided by RefSeq, Jul 2014],

Nanjing BYabscience technology Co.,Ltd



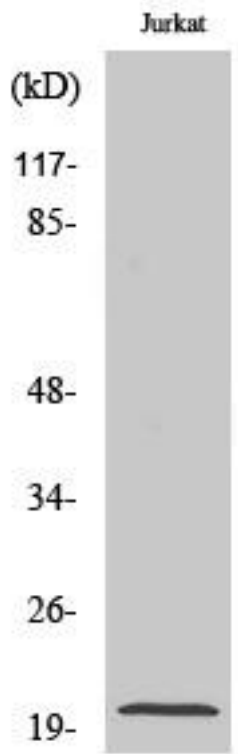
matters needing attention

Avoid repeated freezing and thawing!

Usage suggestions

This product can be used in immunological reaction related experiments. For more information, please consult technical personnel.

Products Images



Western Blot analysis of various cells using FGF-22 Monoclonal Antibody