



Ephrin-A1 Monoclonal Antibody

Catalog No	BYmab-15898
Isotype	IgG
Reactivity	Human;Mouse;Rat
Applications	WB
Gene Name	EFNA1
Protein Name	Ephrin-A1
Immunogen	The antiserum was produced against synthesized peptide derived from human EFNA1. AA range:66-115
Specificity	Ephrin-A1 Monoclonal Antibody detects endogenous levels of Ephrin-A1 protein.
Formulation	Liquid in PBS containing 50% glycerol, 0.5% BSA and 0.02% sodium azide.
Source	Monoclonal, Mouse,IgG
Purification	The antibody was affinity-purified from mouse antiserum by affinity-chromatography using epitope-specific immunogen.
Dilution	WB 1:500-2000
Concentration	1 mg/ml
Purity	≥90%
Storage Stability	-20°C/1 year
Synonyms	EFNA1; EPLG1; LERK1; TNFAIP4; Ephrin-A1; EPH-related receptor tyrosine kinase ligand 1; LERK-1; Immediate early response protein B61; Tumor necrosis factor alpha-induced protein 4; TNF alpha-induced protein 4
Observed Band	24kD
Cell Pathway	Cell membrane ; Lipid-anchor, GPI-anchor .; [Ephrin-A1, secreted form]: Secreted .
Tissue Specificity	Brain. Down-regulated in primary glioma tissues compared to the normal tissues. The soluble monomeric form is expressed in the glioblastoma multiforme (GBM) and breast cancer cells (at protein level).
Function	induction:By TNF-alpha and interleukin-1 beta.,similarity:Belongs to the ephrin family.,subunit:Binds to the receptor tyrosine kinases EPHA2, EPHA4, EPHA5, EPHA6 and EPHA7. Also binds with low affinity to EPHA1.,
Background	This gene encodes a member of the ephrin (EPH) family. The ephrins and EPH-related receptors comprise the largest subfamily of receptor protein-tyrosine kinases and have been implicated in mediating developmental events, especially in the nervous system and in erythropoiesis. Based on their structures and

Nanjing BYabscience technology Co.,Ltd



sequence relationships, ephrins are divided into the ephrin-A (EFNA) class, which are anchored to the membrane by a glycosylphosphatidylinositol linkage, and the ephrin-B (EFNB) class, which are transmembrane proteins. This gene encodes an EFNA class ephrin which binds to the EPHA2, EPHA4, EPHA5, EPHA6, and EPHA7 receptors. Two transcript variants that encode different isoforms were identified through sequence analysis. [provided by RefSeq, Jul 2008],

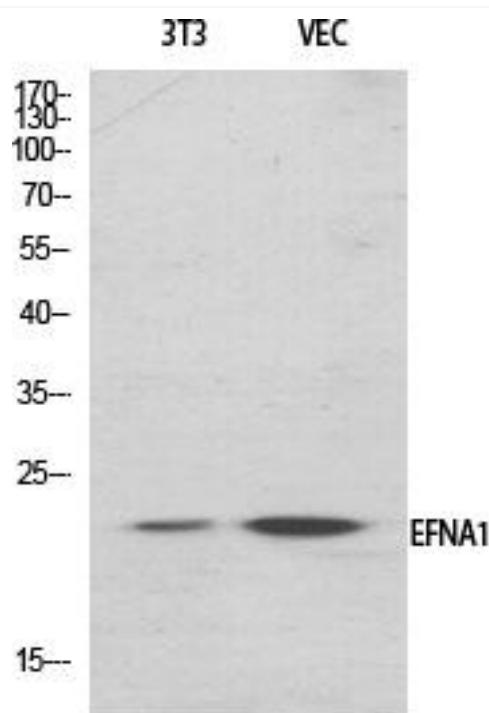
matters needing attention

Avoid repeated freezing and thawing!

Usage suggestions

This product can be used in immunological reaction related experiments. For more information, please consult technical personnel.

Products Images



Western Blot analysis of various cells using Ephrin-A1 Monoclonal Antibody