



# CMTM3 Monoclonal Antibody

Catalog No	BYmab-15891
Isotype	IgG
Reactivity	Human;Monkey
Applications	WB
Gene Name	CMTM3
Protein Name	CKLF-like MARVEL transmembrane domain-containing protein 3
Immunogen	The antiserum was produced against synthesized peptide derived from human CKLF3. AA range:1-50
Specificity	CMTM3 Monoclonal Antibody detects endogenous levels of CMTM3 protein.
Formulation	Liquid in PBS containing 50% glycerol, 0.5% BSA and 0.02% sodium azide.
Source	Monoclonal, Mouse,IgG
Purification	The antibody was affinity-purified from mouse antiserum by affinity-chromatography using epitope-specific immunogen.
Dilution	WB 1:500-2000
Concentration	1 mg/ml
Purity	≥90%
Storage Stability	-20°C/1 year
Synonyms	CMTM3; CKLFSF3; CKLF-like MARVEL transmembrane domain-containing protein 3; Chemokine-like factor superfamily member 3
Observed Band	22kD
Cell Pathway	Membrane; Multi-pass membrane protein.
Tissue Specificity	Expressed in the leukocytes, placenta and testis.
Function	similarity:Belongs to the chemokine-like factor family.,similarity:Contains 1 MARVEL domain.,tissue specificity:Expressed in the leukocytes, placenta and testis.,
Background	This gene belongs to the chemokine-like factor gene superfamily, a novel family that is similar to the chemokine and the transmembrane 4 superfamilies of signaling molecules. This gene is one of several chemokine-like factor genes located in a cluster on chromosome 16. Alternatively spliced transcript variants containing different 5' and 3' UTRs, but encoding the same protein, have been identified. [provided by RefSeq, Jul 2008],

Nanjing BYabscience technology Co.,Ltd



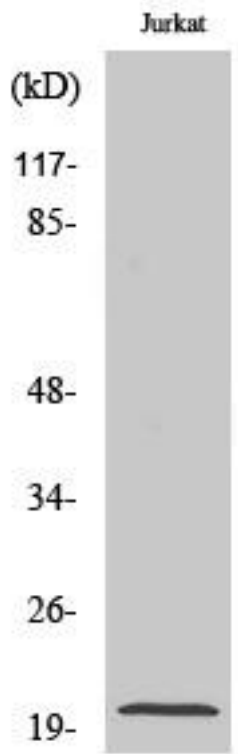
**matters needing attention**

Avoid repeated freezing and thawing!

**Usage suggestions**

This product can be used in immunological reaction related experiments. For more information, please consult technical personnel.

## Products Images



Western Blot analysis of various cells using CMTM3 Monoclonal Antibody

Nanjing BYabs science technology Co.,Ltd

网址: [www.njbybio.com](http://www.njbybio.com)

官方热线: 025-5229-8998

监督电话: 15950492658