



CMTM2 Monoclonal Antibody

Catalog No	BYmab-15890
Isotype	IgG
Reactivity	Human;Rat;Mouse;
Applications	WB
Gene Name	CMTM2
Protein Name	CKLF-like MARVEL transmembrane domain-containing protein 2
Immunogen	The antiserum was produced against synthesized peptide derived from human CKLF2. AA range:171-220
Specificity	CMTM2 Monoclonal Antibody detects endogenous levels of CMTM2 protein.
Formulation	Liquid in PBS containing 50% glycerol, 0.5% BSA and 0.02% sodium azide.
Source	Monoclonal, Mouse,IgG
Purification	The antibody was affinity-purified from mouse antiserum by affinity-chromatography using epitope-specific immunogen.
Dilution	WB 1:500-2000
Concentration	1 mg/ml
Purity	≥90%
Storage Stability	-20°C/1 year
Synonyms	CMTM2; CKLFSF2; CKLF-like MARVEL transmembrane domain-containing protein 2; Chemokine-like factor superfamily member 2
Observed Band	27kD
Cell Pathway	Membrane; Multi-pass membrane protein.
Tissue Specificity	Highly expressed in testis.
Function	similarity:Belongs to the chemokine-like factor family.,similarity:Contains 1 MARVEL domain.,tissue specificity:Highly expressed in testis.,
Background	This gene belongs to the chemokine-like factor gene superfamily, a novel family that links the chemokine and the transmembrane 4 superfamilies of signaling molecules. The protein encoded by this gene may play an important role in testicular development. [provided by RefSeq, Jul 2008],
matters needing attention	Avoid repeated freezing and thawing!

Nanjing BYabscience technology Co.,Ltd

网址: www.njbybio.com

官方热线: 025-5229-8998

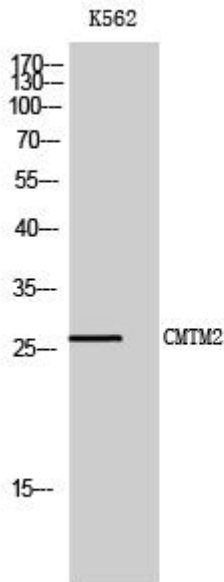
监督电话: 15950492658



Usage suggestions

This product can be used in immunological reaction related experiments. For more information, please consult technical personnel.

Products Images



Western Blot analysis of various cells using CMTM2 Monoclonal Antibody