



# BMP-7 Monoclonal Antibody

Catalog No	BYmab-15880
Isotype	IgG
Reactivity	Human;Mouse;Rat
Applications	WB
Gene Name	BMP7
Protein Name	Bone morphogenetic protein 7
Immunogen	The antiserum was produced against synthesized peptide derived from human BMP-7. AA range:124-173
Specificity	BMP-7 Monoclonal Antibody detects endogenous levels of BMP-7 protein.
Formulation	Liquid in PBS containing 50% glycerol, 0.5% BSA and 0.02% sodium azide.
Source	Monoclonal, Mouse,IgG
Purification	The antibody was affinity-purified from mouse antiserum by affinity-chromatography using epitope-specific immunogen.
Dilution	WB 1:500-2000
Concentration	1 mg/ml
Purity	≥90%
Storage Stability	-20°C/1 year
Synonyms	BMP7; OP1; Bone morphogenetic protein 7; BMP-7; Osteogenic protein 1; OP-1; Eptoterminalfa
Observed Band	55kD
Cell Pathway	Secreted.
Tissue Specificity	Expressed in the kidney and bladder. Lower levels seen in the brain.
Function	function:Induces cartilage and bone formation. May be the osteoinductive factor responsible for the phenomenon of epithelial osteogenesis. Plays a role in calcium regulation and bone homeostasis.,online information:Bone morphogenetic protein 7 entry,pharmaceutical:Available under the names Osigraft (Stryker). Its use is indicated in the treatment of tibial non-union of at least 9 month duration, secondary to trauma, in skeletally mature patients, in cases where autograft has failed or is unfeasible.,PTM:Several N-termini starting at positions 293, 300, 315 and 316 have been identified by direct sequencing resulting in secretion of different mature forms (PubMed:17977014).,similarity:Belongs to the TGF-beta

Nanjing BYabscience technology Co.,Ltd



family.,subunit:Homodimer; disulfide-linked. Interacts with SOSTDC1. Interacts with TWSG1.,tissue specificity:Expressed in the kidneys and bladder. Lower levels seen in the brain.,

## Background

This gene encodes a secreted ligand of the TGF-beta (transforming growth factor-beta) superfamily of proteins. Ligands of this family bind various TGF-beta receptors leading to recruitment and activation of SMAD family transcription factors that regulate gene expression. The encoded preproprotein is proteolytically processed to generate each subunit of the disulfide-linked homodimer, which plays a role in bone, kidney and brown adipose tissue development. Additionally, this protein induces ectopic bone formation and may promote fracture healing in human patients. [provided by RefSeq, Jul 2016],

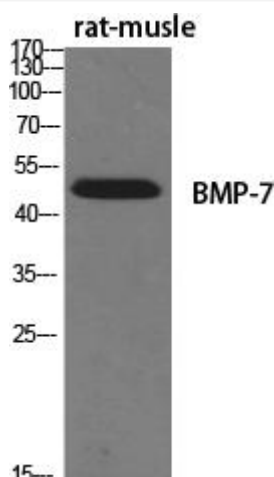
## matters needing attention

Avoid repeated freezing and thawing!

## Usage suggestions

This product can be used in immunological reaction related experiments. For more information, please consult technical personnel.

## Products Images



Western Blot analysis of various cells using BMP-7 Monoclonal Antibody