



BMP-5 Monoclonal Antibody

| | |
|--------------------|--|
| Catalog No | BYmab-15879 |
| Isotype | IgG |
| Reactivity | Human;Mouse |
| Applications | WB |
| Gene Name | BMP5 |
| Protein Name | Bone morphogenetic protein 5 |
| Immunogen | The antiserum was produced against synthesized peptide derived from human BMP-5. AA range:114-163 |
| Specificity | BMP-5 Monoclonal Antibody detects endogenous levels of BMP-5 protein. |
| Formulation | Liquid in PBS containing 50% glycerol, 0.5% BSA and 0.02% sodium azide. |
| Source | Monoclonal, Mouse,IgG |
| Purification | The antibody was affinity-purified from mouse antiserum by affinity-chromatography using epitope-specific immunogen. |
| Dilution | WB 1:500-2000 |
| Concentration | 1 mg/ml |
| Purity | ≥90% |
| Storage Stability | -20°C/1 year |
| Synonyms | BMP5; Bone morphogenetic protein 5; BMP-5 |
| Observed Band | 52kD |
| Cell Pathway | Secreted. |
| Tissue Specificity | Expressed in the lung and liver. |
| Function | function:Induces cartilage and bone formation.,online information:Bone morphogenetic protein 5 entry,similarity:Belongs to the TGF-beta family.,subunit:Homodimer; disulfide-linked.,tissue specificity:Expressed in the lung and liver., |
| Background | This gene encodes a secreted ligand of the TGF-beta (transforming growth factor-beta) superfamily of proteins. Ligands of this family bind various TGF-beta receptors leading to recruitment and activation of SMAD family transcription factors that regulate gene expression. The encoded preproprotein is proteolytically processed to generate each subunit of the disulfide-linked homodimer, which plays a role in bone and cartilage development. |

Nanjing BYabscience technology Co.,Ltd



Polymorphisms in this gene may be associated with osteoarthritis in human patients. This gene is differentially regulated in multiple human cancers. This gene encodes distinct protein isoforms that may be similarly proteolytically processed. [provided by RefSeq, Jul 2016],

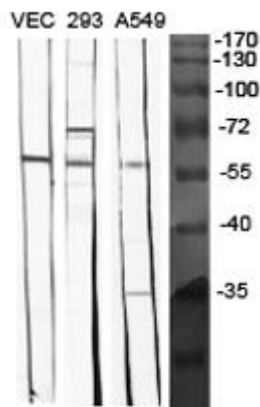
matters needing attention

Avoid repeated freezing and thawing!

Usage suggestions

This product can be used in immunological reaction related experiments. For more information, please consult technical personnel.

Products Images



Western Blot analysis of various cells using BMP-5 Monoclonal Antibody