



Angptl7 Monoclonal Antibody

Catalog No	BYmab-15874
Isotype	IgG
Reactivity	Human;Mouse
Applications	WB
Gene Name	ANGPTL7
Protein Name	Angiopoietin-related protein 7
Immunogen	The antiserum was produced against synthesized peptide derived from human ANGPTL7. AA range:297-346
Specificity	Angptl7 Monoclonal Antibody detects endogenous levels of Angptl7 protein.
Formulation	Liquid in PBS containing 50% glycerol, 0.5% BSA and 0.02% sodium azide.
Source	Monoclonal, Mouse,IgG
Purification	The antibody was affinity-purified from mouse antiserum by affinity-chromatography using epitope-specific immunogen.
Dilution	WB 1:500-2000
Concentration	1 mg/ml
Purity	≥90%
Storage Stability	-20°C/1 year
Synonyms	ANGPTL7; CDT6; Angiopoietin-related protein 7; Angiopoietin-like factor; Angiopoietin-like protein 7; Cornea-derived transcript 6 protein
Observed Band	50kD
Cell Pathway	Secreted .
Tissue Specificity	Higly expressed in the cornea (at protein level) (PubMed:11682471). Expression is restricted to the stromal layer (PubMed:11682471). Also detected at the junction between the corneal stromal layer and the conjunctiva. Not detected in the sclera (PubMed:11682471).
Function	similarity:Contains 1 fibrinogen C-terminal domain.,tissue specificity:Highly and specifically expressed in the cornea where is confined to the stromal layer.,
Background	similarity:Contains 1 fibrinogen C-terminal domain.,tissue specificity:Highly and specifically expressed in the cornea where is confined to the stromal layer.,
matters needing attention	Avoid repeated freezing and thawing!

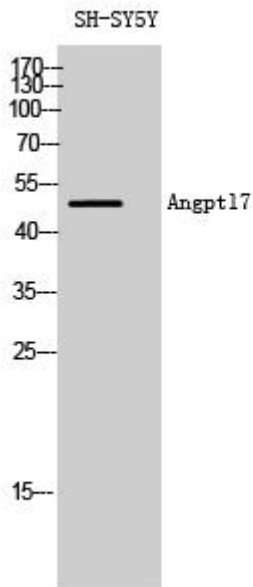
Nanjing BYabscience technology Co.,Ltd



Usage suggestions

This product can be used in immunological reaction related experiments. For more information, please consult technical personnel.

Products Images



Western Blot analysis of various cells using Angptl7 Monoclonal Antibody