



Amylin Monoclonal Antibody

Catalog No	BYmab-15873
Isotype	IgG
Reactivity	Human;Rat;Mouse;
Applications	WB
Gene Name	IAPP
Protein Name	Islet amyloid polypeptide
Immunogen	The antiserum was produced against synthesized peptide derived from human Amylin. AA range:1-50
Specificity	Amylin Monoclonal Antibody detects endogenous levels of Amylin protein.
Formulation	Liquid in PBS containing 50% glycerol, 0.5% BSA and 0.02% sodium azide.
Source	Monoclonal, Mouse,IgG
Purification	The antibody was affinity-purified from mouse antiserum by affinity-chromatography using epitope-specific immunogen.
Dilution	WB 1:500-2000
Concentration	1 mg/ml
Purity	≥90%
Storage Stability	-20°C/1 year
Synonyms	IAPP; Islet amyloid polypeptide; Amylin; Diabetes-associated peptide; DAP; Insulinoma amyloid peptide
Observed Band	25kD
Cell Pathway	Secreted .
Tissue Specificity	
Function	disease:IAPP is the peptide subunit of amyloid found in pancreatic islets of type 2 diabetic patients and in insulinomas.,function:Selectively inhibits insulin-stimulated glucose utilization and glycogen deposition in muscle, while not affecting adipocyte glucose metabolism.,online information:Amylin entry,similarity:Belongs to the calcitonin family.,
Background	islet amyloid polypeptide(IAPP) Homo sapiens This gene encodes a member of the calcitonin family of peptide hormones. This hormone is released from pancreatic beta cells following food intake to regulate blood glucose levels and act as a satiation signal. Human patients with type 1 and advanced type 2 diabetes exhibit reduced levels of the encoded hormone in blood and pancreas. This

Nanjing BYabscience technology Co.,Ltd



protein also exhibits a bactericidal, antimicrobial activity. [provided by RefSeq, Jul 2016],

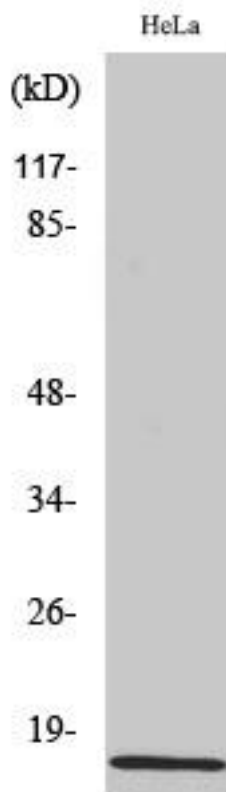
matters needing attention

Avoid repeated freezing and thawing!

Usage suggestions

This product can be used in immunological reaction related experiments. For more information, please consult technical personnel.

Products Images



Western Blot analysis of various cells using Amylin Monoclonal Antibody