



# Ephrin-B1/2/3 (phospho Tyr324) Monoclonal Antibody

<b>Catalog No</b>	BYmab-15867
<b>Isotype</b>	IgG
<b>Reactivity</b>	Human;Mouse;Rat
<b>Applications</b>	WB
<b>Gene Name</b>	EFNB1/EFNB2/EFNB3
<b>Protein Name</b>	Ephrin-B1/2/3
<b>Immunogen</b>	The antiserum was produced against synthesized peptide derived from human Ephrin B1/B2/B3 around the phosphorylation site of Tyr324. AA range:290-339
<b>Specificity</b>	Phospho-Ephrin-B1/2/3 (Y324) Monoclonal Antibody detects endogenous levels of Ephrin-B1/2/3 protein only when phosphorylated at Y324.
<b>Formulation</b>	Liquid in PBS containing 50% glycerol, 0.5% BSA and 0.02% sodium azide.
<b>Source</b>	Monoclonal, Mouse,IgG
<b>Purification</b>	The antibody was affinity-purified from mouse antiserum by affinity-chromatography using epitope-specific immunogen.
<b>Dilution</b>	WB 1:500-2000
<b>Concentration</b>	1 mg/ml
<b>Purity</b>	≥90%
<b>Storage Stability</b>	-20°C/1 year
<b>Synonyms</b>	EFNB1; EFL3; EPLG2; LERK2; Ephrin-B1; EFL-3; ELK ligand; ELK-L; EPH-related receptor tyrosine kinase ligand 2; LERK-2; EFNB2; EPLG5; HTKL; LERK5; Ephrin-B2; EPH-related receptor tyrosine kinase ligand 5; LERK-5; HTK ligand; HTK-L; EFNB3; EP
<b>Observed Band</b>	46kD
<b>Cell Pathway</b>	Cell membrane ; Single-pass type I membrane protein . Membrane raft . May recruit GRIP1 and GRIP2 to membrane raft domains. . ; [Ephrin-B1 C-terminal fragment]: Cell membrane ; Single-pass type I membrane protein . ; [Ephrin-B1 intracellular domain]: Nucleus . Colocalizes with ZHX2 in the nucleus. .
<b>Tissue Specificity</b>	Widely expressed (PubMed:8070404, PubMed:7973638). Detected in both neuronal and non-neuronal tissues (PubMed:8070404, PubMed:7973638). Seems to have particularly strong expression in retina, sciatic nerve, heart and spinal cord (PubMed:7973638).
<b>Function</b>	disease:Defects in EFNB1 are a cause of craniofrontonasal syndrome (CFNS) [MIM:304110]; also known as craniofrontonasal dysplasia (CFND). CFNS is an X-linked inherited syndrome characterized by hypertelorism, coronal synostosis

**Nanjing BYabscience technology Co.,Ltd**



with brachycephaly, downslanting palpebral fissures, clefting of the nasal tip, joint anomalies, longitudinally grooved fingernails and other digital anomalies.,function: Binds to the receptor tyrosine kinases EPHB1 and EPHA1. Binds to, and induce the collapse of, commissural axons/growth cones in vitro. May play a role in constraining the orientation of longitudinally projecting axons.,induction: By TNF-alpha.,PTM: Inducible phosphorylation of tyrosine residues in the cytoplasmic domain.,similarity: Belongs to the ephrin family.,subunit: Interacts with GRIP1 and GRIP2.,tissue specificity: Heart, placenta, lung, liver, skeletal muscle, kidney, pancreas.,

#### Background

The protein encoded by this gene is a type I membrane protein and a ligand of Eph-related receptor tyrosine kinases. It may play a role in cell adhesion and function in the development or maintenance of the nervous system. [provided by RefSeq, Jul 2008],

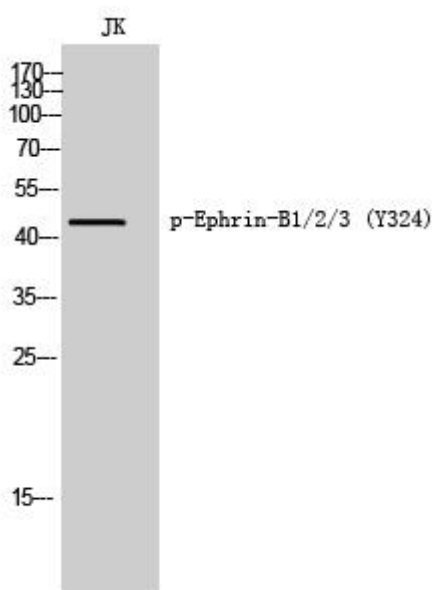
#### matters needing attention

Avoid repeated freezing and thawing!

#### Usage suggestions

This product can be used in immunological reaction related experiments. For more information, please consult technical personnel.

## Products Images



Western Blot analysis of various cells using  
Ephrin-B1/2/3 (phospho Tyr324) Monoclonal Antibody

Nanjing BYabscience technology Co.,Ltd

网址: [www.njbybio.com](http://www.njbybio.com)

官方热线: 025-5229-8998

监督电话: 15950492658