



# HABP2 Monoclonal Antibody

Catalog No	BYmab-15814
Isotype	IgG
Reactivity	Human;Mouse;Rat
Applications	WB
Gene Name	HABP2
Protein Name	Hyaluronan-binding protein 2
Immunogen	Synthesized peptide derived from HABP2 . at AA range: 270-350
Specificity	HABP2 Monoclonal Antibody detects endogenous levels of HABP2 protein.
Formulation	Liquid in PBS containing 50% glycerol, 0.5% BSA and 0.02% sodium azide.
Source	Monoclonal, Mouse,IgG
Purification	The antibody was affinity-purified from mouse antiserum by affinity-chromatography using epitope-specific immunogen.
Dilution	WB 1:500-2000
Concentration	1 mg/ml
Purity	≥90%
Storage Stability	-20°C/1 year
Synonyms	HABP2; HGFAL; PHBP; Hyaluronan-binding protein 2; Factor VII-activating protease; Factor seven-activating protease; FSAP; Hepatocyte growth factor activator-like protein; Plasma hyaluronan-binding protein
Observed Band	63kD
Cell Pathway	Secreted . Secreted as an inactive single-chain precursor and is then activated to a heterodimeric form.
Tissue Specificity	Ubiquitously expressed.
Function	function:Cleaves the alpha-chain at multiple sites and the beta-chain between 'Lys-53' and 'Lys-54' but not the gamma-chain of fibrinogen and therefore does not initiate the formation of the fibrin clot and does not cause the fibrinolysis directly. It does not cleave (activate) prothrombin and plasminogen but converts the inactive single chain urinary plasminogen activator (pro-urokinase) to the active two chain form. Activates coagulation factor VII.,PTM:Proteolytic cleavage at Gly-23 or Met-27 can give rise to the 50 kDa heavy chain and cleavage at Arg-313 or Lys-319 can give rise to the 27 kDa light chain. The heavy chain can undergo further proteolytic cleavage at Lys-169 or Arg-170 to give rise to 2

Nanjing BYabscience technology Co.,Ltd



inactive 26 kDa fragments and the light chain can undergo further proteolytic cleavage at Arg-480 to give rise to inactive 17 kDa and 8 kDa fragments.,similarity:Belongs to the peptidase

#### Background

This gene encodes a member of the peptidase S1 family of serine proteases. The encoded preproprotein is secreted by hepatocytes and proteolytically processed to generate heavy and light chains that form the mature heterodimer. Further autoproteolysis leads to smaller, inactive peptides. This extracellular protease binds hyaluronic acid and may play a role in the coagulation and fibrinolysis systems. Mutations in this gene are associated with nonmedullary thyroid cancer and susceptibility to venous thromboembolism. Alternative splicing results in multiple transcript variants, at least one of which encodes a preproprotein that is proteolytically processed. [provided by RefSeq, Jan 2016],

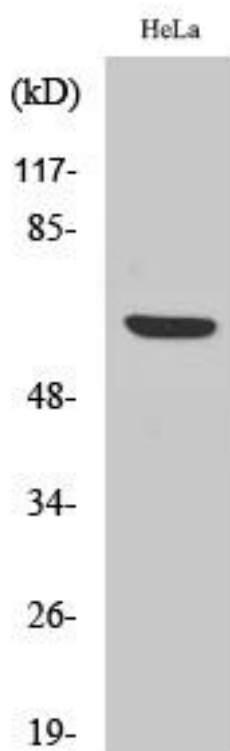
#### matters needing attention

Avoid repeated freezing and thawing!

#### Usage suggestions

This product can be used in immunological reaction related experiments. For more information, please consult technical personnel.

## Products Images



Western Blot analysis of various cells using HABP2 Monoclonal Antibody