



Six2 Monoclonal Antibody

Catalog No	BYmab-15802
Isotype	IgG
Reactivity	Human;Mouse
Applications	WB
Gene Name	SIX2
Protein Name	Homeobox protein SIX2
Immunogen	Synthesized peptide derived from Six2 . at AA range: 30-110
Specificity	Six2 Monoclonal Antibody detects endogenous levels of Six2 protein.
Formulation	Liquid in PBS containing 50% glycerol, 0.5% BSA and 0.02% sodium azide.
Source	Monoclonal, Mouse,IgG
Purification	The antibody was affinity-purified from mouse antiserum by affinity-chromatography using epitope-specific immunogen.
Dilution	WB 1:500-2000
Concentration	1 mg/ml
Purity	≥90%
Storage Stability	-20°C/1 year
Synonyms	SIX2; Homeobox protein SIX2; Sine oculis homeobox homolog 2
Observed Band	
Cell Pathway	Nucleus .
Tissue Specificity	Strongly expressed in skeletal muscle. Expressed in Wilms' tumor and in the cap mesenchyme of fetal kidney (at protein level).
Function	function:May be involved in limb tendon and ligament development.;similarity:Belongs to the SIX/Sine oculis homeobox family.;similarity:Contains 1 homeobox DNA-binding domain.;tissue specificity:Strongly expressed in skeletal muscle.,
Background	This gene is a member of the vertebrate gene family which encode proteins homologous to the Drosophila 'sine oculis' homeobox protein. The encoded protein is a transcription factor which, like other members of this gene family, may be involved in limb or eye development. [provided by RefSeq, Dec 2008],

Nanjing BYabscience technology Co.,Ltd



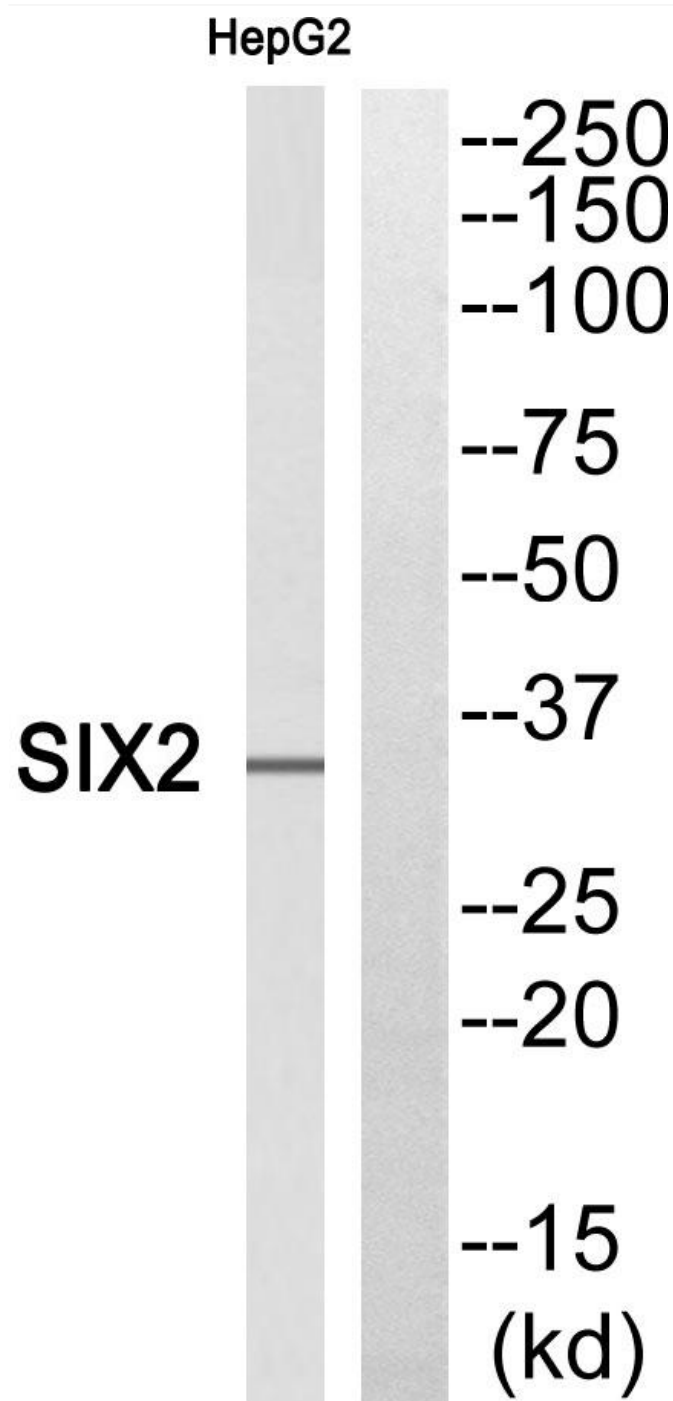
matters needing attention

Avoid repeated freezing and thawing!

Usage suggestions

This product can be used in immunological reaction related experiments. For more information, please consult technical personnel.

Products Images



Western Blot analysis of various cells using Six2 Monoclonal Antibody

Nanjing BYabscience technology Co.,Ltd

网址: www.njbybio.com

官方热线: 025-5229-8998

监督电话: 15950492658