



# Pax-1 Monoclonal Antibody

<b>Catalog No</b>	BYmab-15791
<b>Isotype</b>	IgG
<b>Reactivity</b>	Human;Rat;Mouse;
<b>Applications</b>	WB
<b>Gene Name</b>	PAX1
<b>Protein Name</b>	Paired box protein Pax-1
<b>Immunogen</b>	The antiserum was produced against synthesized peptide derived from human Pax-1. AA range:318-367
<b>Specificity</b>	Pax-1 Monoclonal Antibody detects endogenous levels of Pax-1 protein.
<b>Formulation</b>	Liquid in PBS containing 50% glycerol, 0.5% BSA and 0.02% sodium azide.
<b>Source</b>	Monoclonal, Mouse,IgG
<b>Purification</b>	The antibody was affinity-purified from mouse antiserum by affinity-chromatography using epitope-specific immunogen.
<b>Dilution</b>	WB 1:500-2000
<b>Concentration</b>	1 mg/ml
<b>Purity</b>	≥90%
<b>Storage Stability</b>	-20°C/1 year
<b>Synonyms</b>	PAX1; HUP48; Paired box protein Pax-1; HuP48
<b>Observed Band</b>	36kD
<b>Cell Pathway</b>	Nucleus.
<b>Tissue Specificity</b>	
<b>Function</b>	function:This protein is a transcriptional activator. It may play a role in the formation of segmented structures of the embryo. May play an important role in the normal development of the vertebral column.,similarity:Contains 1 paired domain.,
<b>Background</b>	This gene is a member of the paired box (PAX) family of transcription factors. Members of the PAX family typically contain a paired box domain and a paired-type homeodomain. These genes play critical roles during fetal development. This gene plays a role in pattern formation during embryogenesis and may be essential for development of the vertebral column. This gene is silenced by methylation in ovarian and cervical cancers and may be a tumor

**Nanjing BYabscience technology Co.,Ltd**



suppressor gene. Mutations in this gene are also associated with vertebral malformations. [provided by RefSeq, Mar 2012],

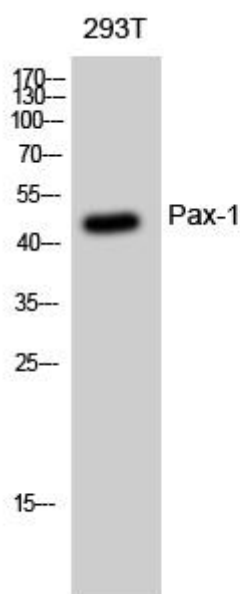
**matters needing attention**

Avoid repeated freezing and thawing!

**Usage suggestions**

This product can be used in immunological reaction related experiments. For more information, please consult technical personnel.

## Products Images



Western Blot analysis of various cells using Pax-1 Monoclonal Antibody