



## Nkx-6.3 Monoclonal Antibody

Catalog No	BYmab-15786
Isotype	IgG
Reactivity	Human;Mouse;Monkey
Applications	WB
Gene Name	NKX6-3
Protein Name	Homeobox protein Nkx-6.3
Immunogen	The antiserum was produced against synthesized peptide derived from human NKX6.3. AA range:161-210
Specificity	Nkx-6.3 Monoclonal Antibody detects endogenous levels of Nkx-6.3 protein.
Formulation	Liquid in PBS containing 50% glycerol, 0.5% BSA and 0.02% sodium azide.
Source	Monoclonal, Mouse,IgG
Purification	The antibody was affinity-purified from mouse antiserum by affinity-chromatography using epitope-specific immunogen.
Dilution	WB 1:500-2000
Concentration	1 mg/ml
Purity	≥90%
Storage Stability	-20°C/1 year
Synonyms	NKX6-3; Homeobox protein Nkx-6.3
Observed Band	34kD
Cell Pathway	Nucleus .
Tissue Specificity	Brain,
Function	function:Putative transcription factor, which may be involved in patterning of central nervous system and pancreas.,similarity:Contains 1 homeobox DNA-binding domain.,
Background	The NKX family of homeodomain proteins controls numerous developmental processes. Members of the NKX6 subfamily, including NKX6-3, are involved in development of the central nervous system (CNS), gastrointestinal tract, and pancreas (Alanentalo et al., 2006 [PubMed 16326147]).[supplied by OMIM, Mar 2008],

Nanjing BYabscience technology Co.,Ltd



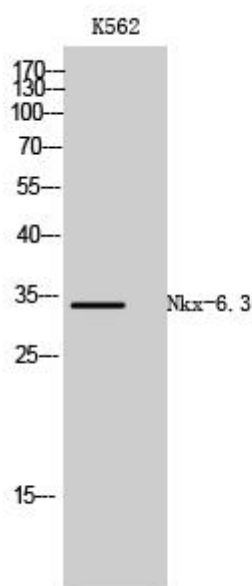
**matters needing attention**

Avoid repeated freezing and thawing!

**Usage suggestions**

This product can be used in immunological reaction related experiments. For more information, please consult technical personnel.

## Products Images



Western Blot analysis of various cells using Nkx-6.3 Monoclonal Antibody