



# Nkx-2.6 Monoclonal Antibody

Catalog No	BYmab-15782
Isotype	IgG
Reactivity	Human;Rat;Mouse;
Applications	WB
Gene Name	NKX2-6
Protein Name	Homeobox protein Nkx-2.6
Immunogen	The antiserum was produced against synthesized peptide derived from human NKX26. AA range:91-140
Specificity	Nkx-2.6 Monoclonal Antibody detects endogenous levels of Nkx-2.6 protein.
Formulation	Liquid in PBS containing 50% glycerol, 0.5% BSA and 0.02% sodium azide.
Source	Monoclonal, Mouse,IgG
Purification	The antibody was affinity-purified from mouse antiserum by affinity-chromatography using epitope-specific immunogen.
Dilution	WB 1:500-2000
Concentration	1 mg/ml
Purity	≥90%
Storage Stability	-20°C/1 year
Synonyms	NKX2-6; NKX2F; Homeobox protein Nkx-2.6; Homeobox protein NK-2 homolog F
Observed Band	28kD
Cell Pathway	Nucleus .
Tissue Specificity	
Function	
Background	This gene encodes a homeobox-containing protein that belongs to the NK-2 homeobox family. This protein is a vertebrate homolog of Drosophila homeobox-containing protein called 'tinman', which has been shown to be essential for development of the heart-like dorsal vessel. In conjunction with related gene, NKX2-5, this gene may play a role in both pharyngeal and cardiac embryonic development. Mutations in this gene are associated with persistent truncus arteriosus.[provided by RefSeq, Aug 2011],

Nanjing BYabscience technology Co.,Ltd

网址: [www.njbybio.com](http://www.njbybio.com)

官方热线: 025-5229-8998

监督电话: 15950492658



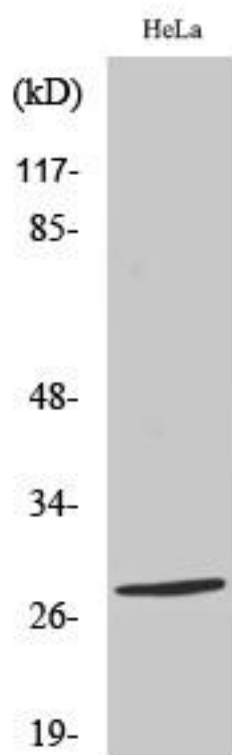
**matters needing attention**

Avoid repeated freezing and thawing!

**Usage suggestions**

This product can be used in immunological reaction related experiments. For more information, please consult technical personnel.

## Products Images



Western Blot analysis of various cells using Nkx-2.6 Monoclonal Antibody