



# LHX1 Monoclonal Antibody

Catalog No	BYmab-15775
Isotype	IgG
Reactivity	Human;Mouse;Rat
Applications	WB
Gene Name	LHX1
Protein Name	LIM/homeobox protein Lhx1
Immunogen	Synthesized peptide derived from the Internal region of human LHX1.
Specificity	LHX1 Monoclonal Antibody detects endogenous levels of LHX1 protein.
Formulation	Liquid in PBS containing 50% glycerol, 0.5% BSA and 0.02% sodium azide.
Source	Monoclonal, Mouse,IgG
Purification	The antibody was affinity-purified from mouse antiserum by affinity-chromatography using epitope-specific immunogen.
Dilution	WB 1:500-2000
Concentration	1 mg/ml
Purity	≥90%
Storage Stability	-20°C/1 year
Synonyms	LHX1; LIM-1; LIM1; LIM/homeobox protein Lhx1; LIM homeobox protein 1; Homeobox protein Lim-1; hLim-1
Observed Band	44kD
Cell Pathway	Nucleus .
Tissue Specificity	Expressed in the brain, thymus, and tonsils. Expressed in samples from patients with chronic myeloid leukemia (CML) and in 58% of acute myeloid leukemia (AML) cell lines.
Function	domain:The LIM domains exert a negative regulatory function and disruption of the LIM domains produces an activated form. In addition, two activation domains and a negative regulatory domain exist C-terminally to the homeobox.,function:Potential transcription factor. May play a role in early mesoderm formation and later in lateral mesoderm differentiation and neurogenesis.,similarity:Contains 1 homeobox DNA-binding domain.,similarity:Contains 2 LIM zinc-binding domains.,subunit:Interacts with LDB1 via the tandem LIM domains.,tissue specificity:Expressed in the brain, thymus, and tonsils. Expressed in samples from patients with chronic myeloid leukemia (CML) and in 58% of acute myeloid leukemia (AML) cell lines.,

Nanjing BYabscience technology Co.,Ltd



## Background

This gene encodes a member of a large protein family which contains the LIM domain, a unique cysteine-rich zinc-binding domain. The encoded protein is a transcription factor important for the development of the renal and urogenital systems. This gene is a candidate for Mayer-Rokitansky-Kuster-Hauser syndrome, a disorder characterized by anomalies in the female genital tract. [provided by RefSeq, Dec 2010],

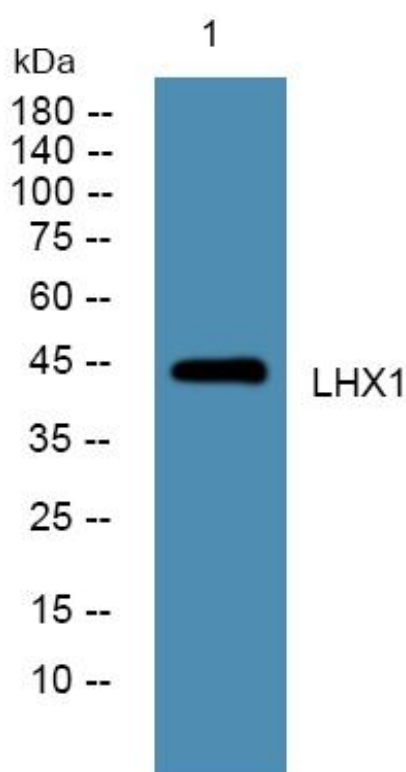
## matters needing attention

Avoid repeated freezing and thawing!

## Usage suggestions

This product can be used in immunological reaction related experiments. For more information, please consult technical personnel.

## Products Images



Western Blot analysis of various cells using LHX1 Monoclonal Antibody