



# Hox-C6 Monoclonal Antibody

Catalog No	BYmab-15768
Isotype	IgG
Reactivity	Human;Mouse
Applications	WB
Gene Name	HOXC6
Protein Name	Homeobox protein Hox-C6
Immunogen	The antiserum was produced against synthesized peptide derived from human HOXC6. AA range:186-235
Specificity	Hox-C6 Monoclonal Antibody detects endogenous levels of Hox-C6 protein.
Formulation	Liquid in PBS containing 50% glycerol, 0.5% BSA and 0.02% sodium azide.
Source	Monoclonal, Mouse,IgG
Purification	The antibody was affinity-purified from mouse antiserum by affinity-chromatography using epitope-specific immunogen.
Dilution	WB 1:500-2000
Concentration	1 mg/ml
Purity	≥90%
Storage Stability	-20°C/1 year
Synonyms	HOXC6; HOX3C; Homeobox protein Hox-C6; Homeobox protein CP25; Homeobox protein HHO.C8; Homeobox protein Hox-3C
Observed Band	26kD
Cell Pathway	Nucleus.
Tissue Specificity	Lung,
Function	function:Sequence-specific transcription factor which is part of a developmental regulatory system that provides cells with specific positional identities on the anterior-posterior axis.;similarity:Belongs to the Antp homeobox family.;similarity:Contains 1 homeobox DNA-binding domain.,
Background	This gene belongs to the homeobox family, members of which encode a highly conserved family of transcription factors that play an important role in morphogenesis in all multicellular organisms. Mammals possess four similar homeobox gene clusters, HOXA, HOXB, HOXC and HOXD, which are located on different chromosomes and consist of 9 to 11 genes arranged in tandem. This gene, HOXC6, is one of several HOXC genes located in a cluster on chromosome

**Nanjing BYabscience technology Co.,Ltd**



12. Three genes, HOXC5, HOXC4 and HOXC6, share a 5' non-coding exon. Transcripts may include the shared exon spliced to the gene-specific exons, or they may include only the gene-specific exons. Alternatively spliced transcript variants encoding different isoforms have been identified for HOXC6. Transcript variant two includes the shared exon, and transcript variant one includes only gene-specific exons. [provided by RefSeq, Jul 2008],

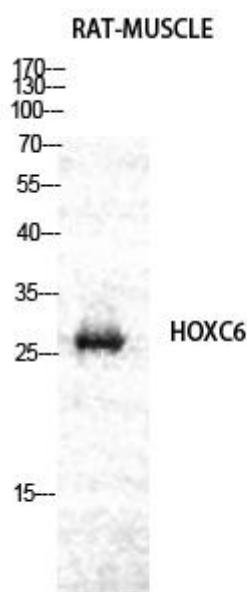
**matters needing attention**

Avoid repeated freezing and thawing!

**Usage suggestions**

This product can be used in immunological reaction related experiments. For more information, please consult technical personnel.

## Products Images



Western Blot analysis of various cells using Hox-C6 Monoclonal Antibody