



Dlx-5 Monoclonal Antibody

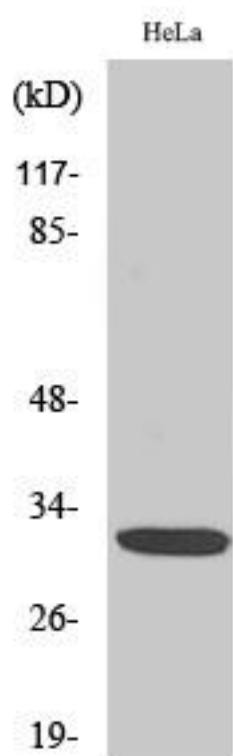
| | |
|--------------------|--|
| Catalog No | BYmab-15754 |
| Isotype | IgG |
| Reactivity | Human;Mouse;Rat |
| Applications | WB |
| Gene Name | DLX5 |
| Protein Name | Homeobox protein DLX-5 |
| Immunogen | The antiserum was produced against synthesized peptide derived from human DLX5. AA range:91-140 |
| Specificity | Dlx-5 Monoclonal Antibody detects endogenous levels of Dlx-5 protein. |
| Formulation | Liquid in PBS containing 50% glycerol, 0.5% BSA and 0.02% sodium azide. |
| Source | Monoclonal, Mouse,IgG |
| Purification | The antibody was affinity-purified from mouse antiserum by affinity-chromatography using epitope-specific immunogen. |
| Dilution | WB 1:500-2000 |
| Concentration | 1 mg/ml |
| Purity | ≥90% |
| Storage Stability | -20°C/1 year |
| Synonyms | DLX5; Homeobox protein DLX-5 |
| Observed Band | 32kD |
| Cell Pathway | Nucleus . |
| Tissue Specificity | Embryo,Lung,Osteoblast,Placenta, |
| Function | developmental stage:First expressed in embryos at 8.5-9 days in facial and branchial arch mesenchyme, otic vesicles and frontonasal ectoderm around olfactory placodes, a day later expression is seen in the developing forebrain in primordia of the ganglionic eminence and ventral diencephalic regions. In day 12.5 embryos, expressed in the brain and bones, and also in all skeletal structures of midgestation embryos after the first cartilage formation. Expression remains unaltered in both brain and skeleton in day 15 embryos and slowly decreases in day 17 embryos.,similarity:Belongs to the distal-less homeobox family.,similarity:Contains 1 homeobox DNA-binding domain.,subunit:Interacts with G22P1 (Ku70)., |

Nanjing BYabscience technology Co.,Ltd



| | |
|----------------------------------|--|
| Background | This gene encodes a member of a homeobox transcription factor gene family similar to the <i>Drosophila</i> distal-less gene. The encoded protein may play a role in bone development and fracture healing. Mutation in this gene, which is located in a tail-to-tail configuration with another member of the family on the long arm of chromosome 7, may be associated with split-hand/split-foot malformation. [provided by RefSeq, Jul 2008], |
| matters needing attention | Avoid repeated freezing and thawing! |
| Usage suggestions | This product can be used in immunological reaction related experiments. For more information, please consult technical personnel. |

Products Images



Western Blot analysis of various cells using Dlx-5 Monoclonal Antibody