



Dlx-4 Monoclonal Antibody

Catalog No	BYmab-15753
Isotype	IgG
Reactivity	Human;Rat;Mouse;
Applications	WB
Gene Name	DLX4
Protein Name	Homeobox protein DLX-4
Immunogen	The antiserum was produced against synthesized peptide derived from human DLX4. AA range:61-110
Specificity	Dlx-4 Monoclonal Antibody detects endogenous levels of Dlx-4 protein.
Formulation	Liquid in PBS containing 50% glycerol, 0.5% BSA and 0.02% sodium azide.
Source	Monoclonal, Mouse,IgG
Purification	The antibody was affinity-purified from mouse antiserum by affinity-chromatography using epitope-specific immunogen.
Dilution	WB 1:500-2000
Concentration	1 mg/ml
Purity	≥90%
Storage Stability	-20°C/1 year
Synonyms	DLX4; BP1; DLX7; DLX8; DLX9; Homeobox protein DLX-4; Beta protein 1; Homeobox protein DLX-7; Homeobox protein DLX-8
Observed Band	34kD
Cell Pathway	Nucleus .
Tissue Specificity	Expressed in leukemia cells and placenta. Also expressed in kidney and fetal liver.
Function	alternative products:Additional isoforms seem to exist. Ref.8 (AAC51171) sequence may be an additional isoform,function:May play a role in determining the production of hemoglobin S. May act as a repressor.,similarity:Belongs to the distal-less homeobox family.,similarity:Contains 1 homeobox DNA-binding domain.,tissue specificity:Expressed in leukemia cells and placenta. Also expressed in kidney and fetal liver.,
Background	Many vertebrate homeo box-containing genes have been identified on the basis of their sequence similarity with Drosophila developmental genes. Members of the Dlx gene family contain a homeobox that is related to that of Distal-less (Dll), a

Nanjing BYabscience technology Co.,Ltd



gene expressed in the head and limbs of the developing fruit fly. The Distal-less (Dlx) family of genes comprises at least 6 different members, DLX1-DLX6. The DLX proteins are postulated to play a role in forebrain and craniofacial development. Three transcript variants have been described for this gene, however, the full length nature of one variant has not been described. Studies of the two splice variants revealed that one encoded isoform functions as a repressor of the beta-globin gene while the other isoform lacks that function. [provided by RefSeq, Jul 2008],

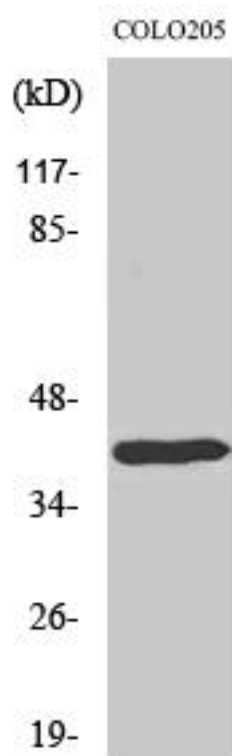
matters needing attention

Avoid repeated freezing and thawing!

Usage suggestions

This product can be used in immunological reaction related experiments. For more information, please consult technical personnel.

Products Images



Western Blot analysis of various cells using Dlx-4 Monoclonal Antibody