



# BSX Monoclonal Antibody

Catalog No	BYmab-15750
Isotype	IgG
Reactivity	Human;Mouse;Rat
Applications	WB
Gene Name	BSX
Protein Name	Brain-specific homeobox protein homolog
Immunogen	Synthesized peptide derived from BSX . at AA range: 150-230
Specificity	BSX Monoclonal Antibody detects endogenous levels of BSX protein.
Formulation	Liquid in PBS containing 50% glycerol, 0.5% BSA and 0.02% sodium azide.
Source	Monoclonal, Mouse,IgG
Purification	The antibody was affinity-purified from mouse antiserum by affinity-chromatography using epitope-specific immunogen.
Dilution	WB 1:500-2000
Concentration	1 mg/ml
Purity	≥90%
Storage Stability	-20°C/1 year
Synonyms	BSX; BSX1; Brain-specific homeobox protein homolog
Observed Band	26kD
Cell Pathway	Nucleus .
Tissue Specificity	
Function	function:DNA binding protein that function as transcriptional activator. Is essential for normal postnatal growth and nursing. Is an essential factor for neuronal neuropeptide Y and agouti-related peptide function and locomotory behavior in the control of energy balance.,online information:Of fidgets and food -Issue 85 of August 2007,similarity:Belongs to the distal-less homeobox family.,similarity:Contains 1 homeobox DNA-binding domain.,
Background	function:DNA binding protein that function as transcriptional activator. Is essential for normal postnatal growth and nursing. Is an essential factor for neuronal neuropeptide Y and agouti-related peptide function and locomotory behavior in the control of energy balance.,online information:Of fidgets and food -Issue 85 of August 2007,similarity:Belongs to the distal-less homeobox

Nanjing BYabscience technology Co.,Ltd



family.,similarity:Contains 1 homeobox DNA-binding domain.,

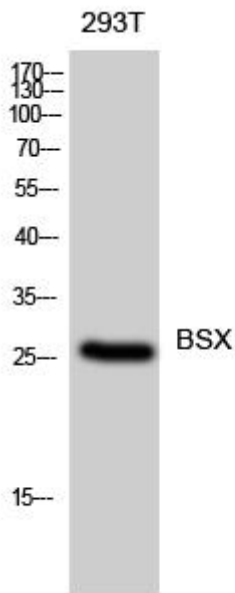
**matters needing attention**

Avoid repeated freezing and thawing!

**Usage suggestions**

This product can be used in immunological reaction related experiments. For more information, please consult technical personnel.

## Products Images



Western Blot analysis of various cells using BSX Monoclonal Antibody