



ARX Monoclonal Antibody

Catalog No	BYmab-15747
Isotype	IgG
Reactivity	Human;Mouse;Rat
Applications	WB
Gene Name	ARX
Protein Name	Homeobox protein ARX
Immunogen	Synthesized peptide derived from ARX . at AA range: 250-330
Specificity	ARX Monoclonal Antibody detects endogenous levels of ARX protein.
Formulation	Liquid in PBS containing 50% glycerol, 0.5% BSA and 0.02% sodium azide.
Source	Monoclonal, Mouse,IgG
Purification	The antibody was affinity-purified from mouse antiserum by affinity-chromatography using epitope-specific immunogen.
Dilution	WB 1:500-2000
Concentration	1 mg/ml
Purity	≥90%
Storage Stability	-20°C/1 year
Synonyms	ARX; Homeobox protein ARX; Aristaless-related homeobox
Observed Band	55kD
Cell Pathway	Nucleus .
Tissue Specificity	Expressed predominantly in fetal and adult brain and skeletal muscle. Expression is specific to the telencephalon and ventral thalamus. There is an absence of expression in the cerebellum throughout development and also in adult.
Function	disease:Defects in ARX are a cause of Partington syndrome (PRTS) [MIM:309510]; also known as X-linked syndromic mental retardation 1 (MRXS1). PRTS is characterized by mental retardation, episodic dystonic hand movements, and dysarthria.,disease:Defects in ARX are the cause of agenesis of corpus callosum with abnormal genitalia (ACC with abnormal genitalia) [MIM:300004]. ACC with abnormal genitalia consists of a brain and genital malformations syndrome.,disease:Defects in ARX are the cause of epileptic encephalopathy early infantile type 1 (EIEE1) [MIM:308350]; also known as myoclonic epilepsy X-linked with intellectual disability and spasticity, X-linked West syndrome or X-linked infantile spasm syndrome (ISSX). EIEE1 is a severe form of epilepsy characterized by frequent tonic seizures or spasms beginning in infancy with a

Nanjing BYabscience technology Co.,Ltd



specific EEG finding of suppression-burst patterns, characterize

Background

This gene is a homeobox-containing gene expressed during development. The expressed protein contains two conserved domains, a C-peptide (or aristaless domain) and the prd-like class homeobox domain. It is a member of the group-II aristaless-related protein family whose members are expressed primarily in the central and/or peripheral nervous system. This gene is thought to be involved in CNS development. Expansion of a polyalanine tract and other mutations in this gene cause X-linked mental retardation and epilepsy. [provided by RefSeq, Jul 2016],

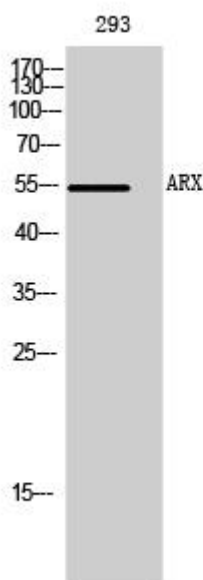
matters needing attention

Avoid repeated freezing and thawing!

Usage suggestions

This product can be used in immunological reaction related experiments. For more information, please consult technical personnel.

Products Images



Western Blot analysis of various cells using ARX Monoclonal Antibody

Nanjing BYabs science technology Co.,Ltd

网址: www.njbybio.com

官方热线: 025-5229-8998

监督电话: 15950492658