



# RSK3 Monoclonal Antibody

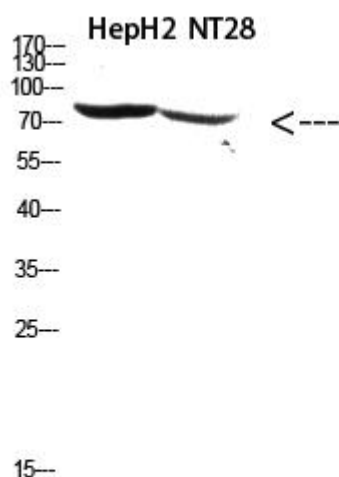
<b>Catalog No</b>	BYmab-15052
<b>Isotype</b>	IgG
<b>Reactivity</b>	Human;Mouse
<b>Applications</b>	WB
<b>Gene Name</b>	RPS6KA2 MAPKAPK1C RSK3
<b>Protein Name</b>	ribosomal protein S6 kinase, 90kDa, polypeptide 2; hypothetical LOC100127984
<b>Immunogen</b>	Synthetic peptide from human protein at AA range: 330-400
<b>Specificity</b>	The antibody detects endogenous RSK3 protein
<b>Formulation</b>	Liquid in PBS containing 50% glycerol, 0.5% BSA and 0.02% sodium azide.
<b>Source</b>	Monoclonal, Mouse,IgG
<b>Purification</b>	The antibody was affinity-purified from mouse antiserum by affinity-chromatography using epitope-specific immunogen.
<b>Dilution</b>	WB 1:500-2000
<b>Concentration</b>	1 mg/ml
<b>Purity</b>	≥90%
<b>Storage Stability</b>	-20°C/1 year
<b>Synonyms</b>	RPS6KA2 MAPKAPK1C RSK3
<b>Observed Band</b>	80kD
<b>Cell Pathway</b>	Nucleus . Cytoplasm .
<b>Tissue Specificity</b>	Widely expressed with higher expression in lung, skeletal muscle, brain, uterus, ovary, thyroid and prostate.
<b>Function</b>	catalytic activity:ATP + a protein = ADP + a phosphoprotein.,cofactor:Magnesium.,enzyme regulation:Activated by multiple phosphorylations on threonine and serine residues.,function:Serine/threonine kinase that may play a role in mediating the growth-factor and stress induced activation of the transcription factor CREB.,PTM:Autophosphorylated on Ser-377, as part of the activation process.,similarity:Belongs to the protein kinase superfamily.,similarity:Belongs to the protein kinase superfamily. AGC Ser/Thr protein kinase family. S6 kinase subfamily.,similarity:Contains 1 AGC-kinase C-terminal domain.,similarity:Contains 2 protein kinase domains.,subunit:Forms a complex with either ERK1 or ERK2 in quiescent cells. Transiently dissociates following mitogenic stimulation.,tissue specificity:Expressed in many tissues. Highest expression in lung and skeletal muscle.,

**Nanjing BYabscience technology Co.,Ltd**



<b>Background</b>	ribosomal protein S6 kinase A2(RPS6KA2) Homo sapiens This gene encodes a member of the RSK (ribosomal S6 kinase) family of serine/threonine kinases. This kinase contains two non-identical kinase catalytic domains and phosphorylates various substrates, including members of the mitogen-activated kinase (MAPK) signalling pathway. The activity of this protein has been implicated in controlling cell growth and differentiation. Alternative splice variants, encoding different isoforms, have been characterized. [provided by RefSeq, Jan 2016],
<b>matters needing attention</b>	Avoid repeated freezing and thawing!
<b>Usage suggestions</b>	This product can be used in immunological reaction related experiments. For more information, please consult technical personnel.

## Products Images



Western Blot analysis of various cells using RSK3 Monoclonal Antibody