



# ALPP/ALPPL2 Monoclonal Antibody

<b>Catalog No</b>	BYmab-15047
<b>Isotype</b>	IgG
<b>Reactivity</b>	Human;Mouse
<b>Applications</b>	WB
<b>Gene Name</b>	ALPP/ALPPL2
<b>Protein Name</b>	Alkaline phosphatase, placental type/Alkaline phosphatase, placental-like
<b>Immunogen</b>	The antiserum was produced against synthesized peptide derived from the N-terminal region of human ALPP/ALPPL2. AA range:1-50
<b>Specificity</b>	ALPP/ALPPL2 Monoclonal Antibody detects endogenous levels of ALPP/ALPPL2 protein.
<b>Formulation</b>	Liquid in PBS containing 50% glycerol, 0.5% BSA and 0.02% sodium azide.
<b>Source</b>	Monoclonal, Mouse,IgG
<b>Purification</b>	The antibody was affinity-purified from mouse antiserum by affinity-chromatography using epitope-specific immunogen.
<b>Dilution</b>	WB 1:500-2000
<b>Concentration</b>	1 mg/ml
<b>Purity</b>	≥90%
<b>Storage Stability</b>	-20°C/1 year
<b>Synonyms</b>	ALPP; PLAP; Alkaline phosphatase, placental type; Alkaline phosphatase Regan isozyme; Placental alkaline phosphatase 1; PLAP-1; ALPPL2; ALPPL; Alkaline phosphatase, placental-likeALP-1; Alkaline phosphatase Nagao isozyme; Germ cell alkaline phosphatase; GCAP; Placental alkaline phosphatase-like; PLAP-like
<b>Observed Band</b>	60kD
<b>Cell Pathway</b>	Cell membrane; Lipid-anchor, GPI-anchor .
<b>Tissue Specificity</b>	Detected in placenta (at protein level).
<b>Function</b>	catalytic activity:A phosphate monoester + H(2)O = an alcohol + phosphate.,cofactor:binds 1 magnesium ion.,cofactor:binds 2 zinc ions.,miscellaneous:In most mammals there are four different isozymes: placental, placental-like, intestinal and tissue non-specific (liver/bone/kidney).,online information:Alkaline phosphatase entry,polymorphism:Placental ALP is highly polymorphic, there are at least three common alleles.,similarity:Belongs to the alkaline phosphatase

**Nanjing BYabscience technology Co.,Ltd**



family.,subunit:Homodimer.,

#### Background

The protein encoded by this gene is an alkaline phosphatase, a metalloenzyme that catalyzes the hydrolysis of phosphoric acid monoesters. It belongs to a multigene family composed of four alkaline phosphatase isoenzymes. The enzyme functions as a homodimer and has a catalytic site containing one magnesium and two zinc ions, which are required for its enzymatic function. The protein is primarily expressed in placental and endometrial tissue; however, strong ectopic expression has been detected in ovarian adenocarcinoma, serous cystadenocarcinoma, and other ovarian cancer cells. [provided by RefSeq, Jan 2015],

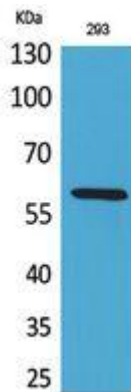
#### matters needing attention

Avoid repeated freezing and thawing!

#### Usage suggestions

This product can be used in immunological reaction related experiments. For more information, please consult technical personnel.

### Products Images



Western Blot analysis of various cells using ALPP/ALPPL2 Monoclonal Antibody

**Nanjing BYabscience technology Co.,Ltd**

网址: [www.njbybio.com](http://www.njbybio.com)

官方热线: 025-5229-8998

监督电话: 15950492658