



TESK1 Monoclonal Antibody

Catalog No	BYmab-15012
Isotype	IgG
Reactivity	Human;Mouse;Rat
Applications	WB
Gene Name	TESK1
Protein Name	Dual specificity testis-specific protein kinase 1
Immunogen	The antiserum was produced against synthesized peptide derived from human TESK1. AA range:181-230
Specificity	TESK1 Monoclonal Antibody detects endogenous levels of TESK1 protein.
Formulation	Liquid in PBS containing 50% glycerol, 0.5% BSA and 0.02% sodium azide.
Source	Monoclonal, Mouse,IgG
Purification	The antibody was affinity-purified from mouse antiserum by affinity-chromatography using epitope-specific immunogen.
Dilution	WB 1:500-2000
Concentration	1 mg/ml
Purity	≥90%
Storage Stability	-20°C/1 year
Synonyms	TESK1; Dual specificity testis-specific protein kinase 1; Testicular protein kinase 1
Observed Band	68kD
Cell Pathway	Cytoplasm . Cytoplasm, perinuclear region . Cytoplasm, cytoskeleton, microtubule organizing center, centrosome . Cell projection, lamellipodium . Colocalizes with SPRY4 in vesicular spots in the cytoplasm (PubMed:15584898). Localized to F-actin-rich lamellipodia at the cell periphery following fibronectin-mediated cell adhesion of Schwann cells (By similarity). .
Tissue Specificity	Expressed in podocytes and renal tubular cells in the kidney (at protein level).
Function	catalytic activity:ATP + a protein = ADP + a phosphoprotein.,cofactor:Magnesium.,cofactor:Manganese.,domain:The extracatalytic C-terminal part is highly rich in proline residues.,enzyme regulation:Activated by autophosphorylation on Ser-220.,function: Dual specificity protein kinase activity catalyzing autophosphorylation and phosphorylation of exogenous substrates on both serine/threonine and tyrosine residues. Probably plays a central role at and after the meiotic phase of spermatogenesis.,PTM:Autophosphorylated on serine and tyrosine

Nanjing BYabscience technology Co.,Ltd



residues.,similarity:Belongs to the protein kinase superfamily. TKL Ser/Thr protein kinase family.,similarity:Contains 1 protein kinase domain.,subunit:Interacts with SPRY4.,

Background

testis-specific kinase 1(TESK1) Homo sapiens This gene product is a serine/threonine protein kinase that contains an N-terminal protein kinase domain and a C-terminal proline-rich domain. Its protein kinase domain is most closely related to those of the LIM motif-containing protein kinases (LIMKs). The encoded protein can phosphorylate myelin basic protein and histone in vitro. The testicular germ cell-specific expression and developmental pattern of expression of the mouse gene suggests that this gene plays an important role at and after the meiotic phase of spermatogenesis. Alternative splicing results in multiple transcript variants encoding different isoforms. [provided by RefSeq, Dec 2015],

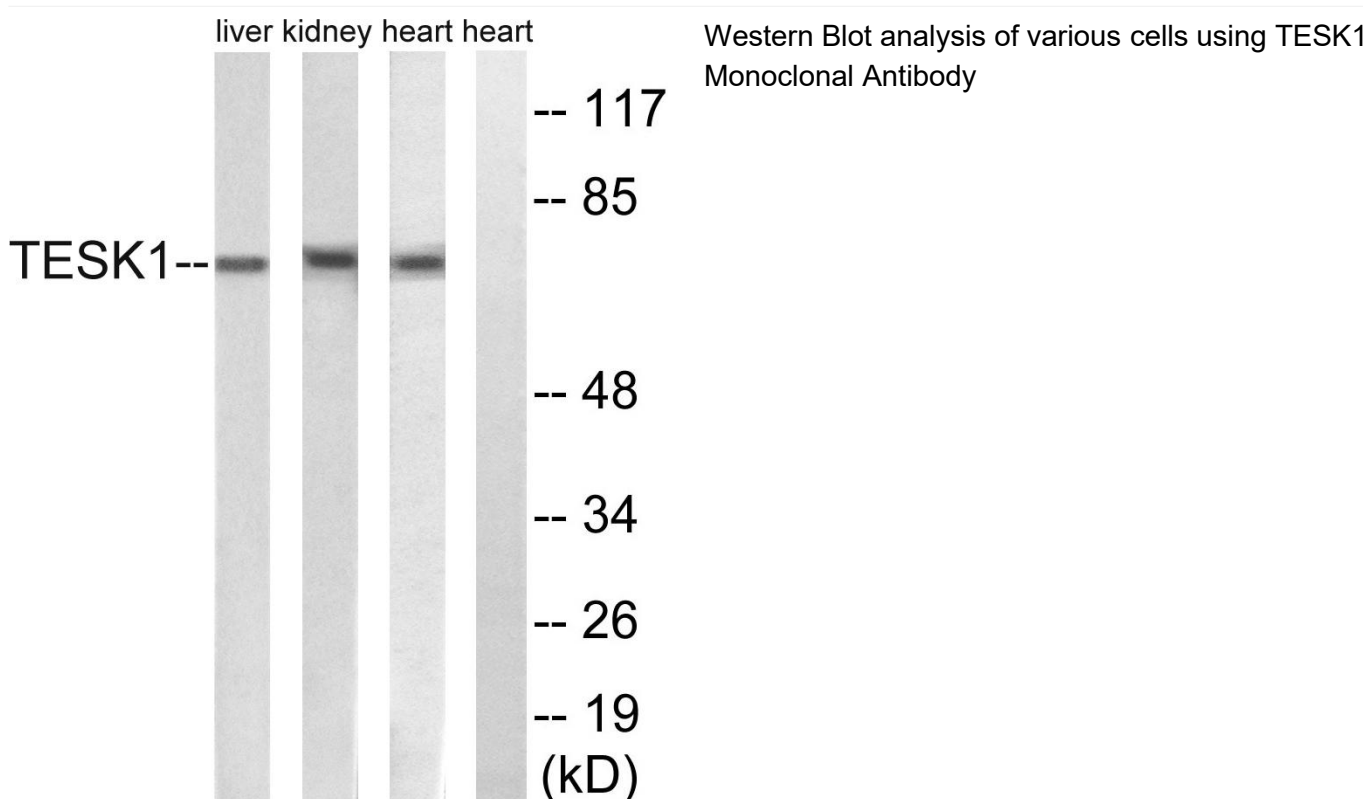
matters needing attention

Avoid repeated freezing and thawing!

Usage suggestions

This product can be used in immunological reaction related experiments. For more information, please consult technical personnel.

Products Images



Nanjing BYabs science technology Co.,Ltd