



SRPK1 Monoclonal Antibody

Catalog No	BYmab-15001
Isotype	IgG
Reactivity	Human;Mouse;Rat
Applications	WB
Gene Name	SRPK1
Protein Name	SRSF protein kinase 1
Immunogen	The antiserum was produced against synthesized peptide derived from human SRPK1. AA range:521-570
Specificity	SRPK1 Monoclonal Antibody detects endogenous levels of SRPK1 protein.
Formulation	Liquid in PBS containing 50% glycerol, 0.5% BSA and 0.02% sodium azide.
Source	Monoclonal, Mouse,IgG
Purification	The antibody was affinity-purified from mouse antiserum by affinity-chromatography using epitope-specific immunogen.
Dilution	WB 1:500-2000
Concentration	1 mg/ml
Purity	≥90%
Storage Stability	-20°C/1 year
Synonyms	SRPK1; SRSF protein kinase 1; SFRS protein kinase 1; Serine/arginine-rich protein-specific kinase 1; SR-protein-specific kinase 1
Observed Band	95kD
Cell Pathway	[Isoform 2]: Cytoplasm. Nucleus. Nucleus matrix. Microsome. Shuttles between the nucleus and the cytoplasm. Inhibition of the Hsp90 ATPase activity, osmotic stress and interaction with HHV-1 ICP27 protein can induce its translocation to the nucleus. KAT5/TIP60 inhibits its nuclear translocation.; [Isoform 1]: Cytoplasm. Nucleus matrix. Microsome. Mainly localized in the microsomal fraction and the cytoplasm, and to a lesser extent in the nuclear matrix.; Cytoplasm . Nucleus, nucleoplasm . Nucleus speckle . Chromosome . Preferentially localizes to the promoter of gene coding regions. .
Tissue Specificity	Isoform 2 is predominantly expressed in the testis but is also present at lower levels in heart, ovary, small intestine, liver, kidney, pancreas and skeletal muscle. Isoform 1 is only seen in the testis, at lower levels than isoform 2. Highly expressed in different erythroid and lymphoid cell lines, with isoform 2 being far more abundant than isoform 1.

Nanjing BYabscience technology Co.,Ltd

网址: www.njbybio.com

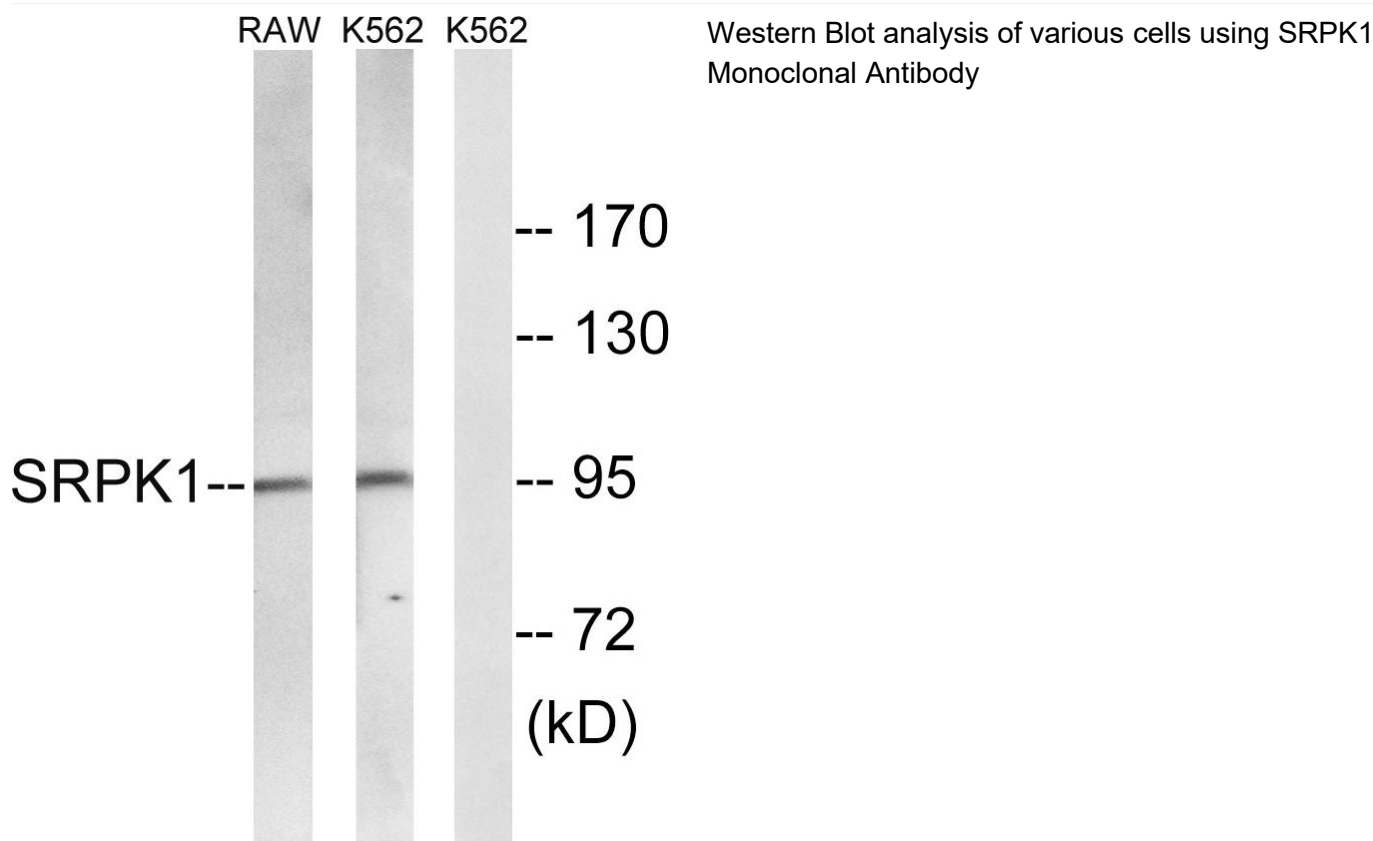
官方热线: 025-5229-8998

监督电话: 15950492658



Function	catalytic activity:ATP + a protein = ADP + a phosphoprotein.,cofactor:Magnesium.,enzyme regulation:Activated by phosphorylation on Ser-51 and Ser-555.,function:Plays a central role in the regulatory network for splicing, controlling the intranuclear distribution of splicing factors in interphase cells and the reorganization of nuclear speckles during mitosis. Hyperphosphorylates RS domain-containing proteins such as SFRS1 and SFRS2 on serine residues during metaphase but at lower levels during interphase. Locks onto SFRS1 to form a stable complex and processively phosphorylates the RS domain. Appears to mediate HBV core protein phosphorylation which is a prerequisite for pregenomic RNA encapsidation into viral capsids.,similarity:Belongs to the protein kinase superfamily. CMGC Ser/Thr protein kinase family.,similarity:Contains 1 protein kinase domain.,subunit:Present in a seven component
Background	This gene encodes a serine/arginine protein kinase specific for the SR (serine/arginine-rich domain) family of splicing factors. The protein localizes to the nucleus and the cytoplasm. It is thought to play a role in regulation of both constitutive and alternative splicing by regulating intracellular localization of splicing factors. Alternative splicing of this gene results in multiple transcript variants. Additional alternatively spliced transcript variants have been described for this gene, but their full length nature have not been determined.[provided by RefSeq, Jul 2010],
matters needing attention	Avoid repeated freezing and thawing!
Usage suggestions	This product can be used in immunological reaction related experiments. For more information, please consult technical personnel.

Products Images



Nanjing BYabs science technology Co.,Ltd