



# SLK Monoclonal Antibody

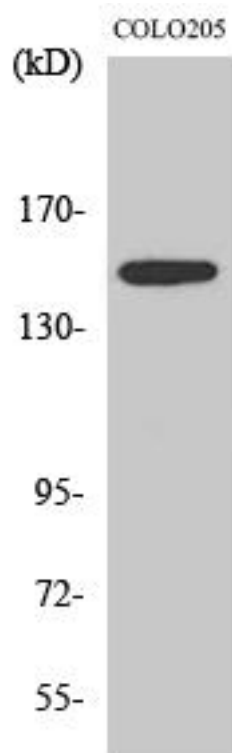
<b>Catalog No</b>	BYmab-14996
<b>Isotype</b>	IgG
<b>Reactivity</b>	Human;Mouse;Rat
<b>Applications</b>	WB
<b>Gene Name</b>	SLK
<b>Protein Name</b>	STE20-like serine/threonine-protein kinase
<b>Immunogen</b>	The antiserum was produced against synthesized peptide derived from human SLK. AA range:1151-1200
<b>Specificity</b>	SLK Monoclonal Antibody detects endogenous levels of SLK protein.
<b>Formulation</b>	Liquid in PBS containing 50% glycerol, 0.5% BSA and 0.02% sodium azide.
<b>Source</b>	Monoclonal, Mouse,IgG
<b>Purification</b>	The antibody was affinity-purified from mouse antiserum by affinity-chromatography using epitope-specific immunogen.
<b>Dilution</b>	WB 1:500-2000
<b>Concentration</b>	1 mg/ml
<b>Purity</b>	≥90%
<b>Storage Stability</b>	-20°C/1 year
<b>Synonyms</b>	SLK; KIAA0204; STK2; STE20-like serine/threonine-protein kinase; STE20-like kinase; hSLK; CTCL tumor antigen se20-9; STE20-related serine/threonine-protein kinase; STE20-related kinase; Serine/threonine-protein kinase 2
<b>Observed Band</b>	150kD
<b>Cell Pathway</b>	Cytoplasm .
<b>Tissue Specificity</b>	Ubiquitously expressed. Highest expression is found in heart and in skeletal muscle.
<b>Function</b>	catalytic activity:ATP + a protein = ADP + a phosphoprotein.,function:Mediates apoptosis and actin stress fiber dissolution.,PTM:Autophosphorylated. Phosphorylated upon DNA damage, probably by ATM or ATR.,PTM:Proteolytically cleaved by caspase-3.,sequence caution:Contaminating sequence. Potential poly-A sequence starting in position 422.,sequence caution:Contaminating sequence. Potential poly-A sequence starting in position 611.,sequence caution:Contaminating sequence. Potential

**Nanjing BYabscience technology Co.,Ltd**



	poly-A sequence starting in position 614.,similarity:Belongs to the protein kinase superfamily. STE Ser/Thr protein kinase family. STE20 subfamily.,similarity:Contains 1 protein kinase domain.,similarity:Contains 1 UVR domain.,tissue specificity:Ubiquitously expressed. Highest expression is found in heart and in skeletal muscle.,
<b>Background</b>	catalytic activity:ATP + a protein = ADP + a phosphoprotein.,function:Mediates apoptosis and actin stress fiber dissolution.,PTM:Autophosphorylated. Phosphorylated upon DNA damage, probably by ATM or ATR.,PTM:Proteolytically cleaved by caspase-3.,sequence caution:Contaminating sequence. Potential poly-A sequence starting in position 422.,sequence caution:Contaminating sequence. Potential poly-A sequence starting in position 611.,sequence caution:Contaminating sequence. Potential poly-A sequence starting in position 614.,similarity:Belongs to the protein kinase superfamily. STE Ser/Thr protein kinase family. STE20 subfamily.,similarity:Contains 1 protein kinase domain.,similarity:Contains 1 UVR domain.,tissue specificity:Ubiquitously expressed. Highest expression is found in heart and in skeletal muscle.,
<b>matters needing attention</b>	Avoid repeated freezing and thawing!
<b>Usage suggestions</b>	This product can be used in immunological reaction related experiments. For more information, please consult technical personnel.

## Products Images



Western Blot analysis of various cells using SLK Monoclonal Antibody