



# Rock-2 Monoclonal Antibody

Catalog No	BYmab-14980
Isotype	IgG
Reactivity	Human;Mouse;Rat;Monkey
Applications	WB
Gene Name	ROCK2
Protein Name	Rho-associated protein kinase 2
Immunogen	The antiserum was produced against synthesized peptide derived from human ROCK2. AA range:691-740
Specificity	Rock-2 Monoclonal Antibody detects endogenous levels of Rock-2 protein.
Formulation	Liquid in PBS containing 50% glycerol, 0.5% BSA and 0.02% sodium azide.
Source	Monoclonal, Mouse,IgG
Purification	The antibody was affinity-purified from mouse antiserum by affinity-chromatography using epitope-specific immunogen.
Dilution	WB 1:500-2000
Concentration	1 mg/ml
Purity	≥90%
Storage Stability	-20°C/1 year
Synonyms	ROCK2; KIAA0619; Rho-associated protein kinase 2; Rho kinase 2; Rho-associated; coiled-coil-containing protein kinase 2; Rho-associated, coiled-coil-containing protein kinase II; ROCK-II; p164 ROCK-2
Observed Band	165kD
Cell Pathway	Cytoplasm. Cell membrane ; Peripheral membrane protein . Nucleus. Cytoplasm, cytoskeleton, microtubule organizing center, centrosome. Cytoplasmic, and associated with actin microfilaments and the plasma membrane. .
Tissue Specificity	Expressed in the brain (at protein level).
Function	catalytic activity:ATP + a protein = ADP + a phosphoprotein.,enzyme regulation:Activated by RHOA binding.,function:Protein kinase that phosphorylates a large number of important signaling proteins, and thereby regulates the assembly of the actin cytoskeleton. Promotes formation of stress fibers and of focal adhesion complexes. Plays a role in smooth muscle contraction.,miscellaneous:Inhibited by Y-27632.,PTM:Phosphorylated upon DNA damage, probably by ATM or ATR.,similarity:Belongs to the protein kinase superfamily. AGC Ser/Thr protein kinase family.,similarity:Contains 1 AGC-kinase

Nanjing BYabscience technology Co.,Ltd



C-terminal domain.,similarity:Contains 1 PH domain.,similarity:Contains 1 phorbol-ester/DAG-type zinc finger.,similarity:Contains 1 protein kinase domain.,similarity:Contains 1 REM (Hr1) repeat.,subcellular location:Cytoplasmic, and associated with actin microfilaments and the plasma membrane.,subunit:Homodim

## Background

The protein encoded by this gene is a serine/threonine kinase that regulates cytokinesis, smooth muscle contraction, the formation of actin stress fibers and focal adhesions, and the activation of the c-fos serum response element. This protein, which is an isozyme of ROCK1 is a target for the small GTPase Rho. [provided by RefSeq, Jul 2008],

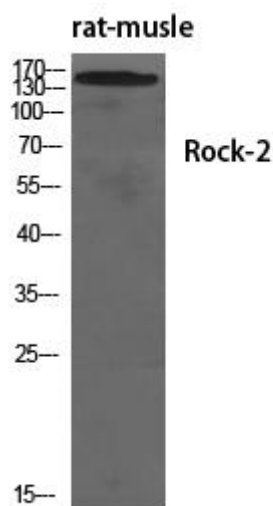
## matters needing attention

Avoid repeated freezing and thawing!

## Usage suggestions

This product can be used in immunological reaction related experiments. For more information, please consult technical personnel.

## Products Images



Western Blot analysis of various cells using Rock-2 Monoclonal Antibody

Nanjing BYabscience technology Co.,Ltd

网址: [www.njbybio.com](http://www.njbybio.com)

官方热线: 025-5229-8998

监督电话: 15950492658