



# Rak Monoclonal Antibody

<b>Catalog No</b>	BYmab-14975
<b>Isotype</b>	IgG
<b>Reactivity</b>	Human;Mouse;Rat
<b>Applications</b>	WB
<b>Gene Name</b>	FRK
<b>Protein Name</b>	Tyrosine-protein kinase FRK
<b>Immunogen</b>	The antiserum was produced against synthesized peptide derived from human FRK. AA range:71-120
<b>Specificity</b>	Rak Monoclonal Antibody detects endogenous levels of Rak protein.
<b>Formulation</b>	Liquid in PBS containing 50% glycerol, 0.5% BSA and 0.02% sodium azide.
<b>Source</b>	Monoclonal, Mouse,IgG
<b>Purification</b>	The antibody was affinity-purified from mouse antiserum by affinity-chromatography using epitope-specific immunogen.
<b>Dilution</b>	WB 1:500-2000
<b>Concentration</b>	1 mg/ml
<b>Purity</b>	≥90%
<b>Storage Stability</b>	-20°C/1 year
<b>Synonyms</b>	FRK; PTK5; RAK; Tyrosine-protein kinase FRK; FYN-related kinase; Nuclear tyrosine protein kinase RAK; Protein-tyrosine kinase 5
<b>Observed Band</b>	55kD
<b>Cell Pathway</b>	Cytoplasm . Nucleus . Predominantly found in the nucleus, with a small fraction found in the cell periphery.
<b>Tissue Specificity</b>	Predominantly expressed in epithelial derived cell lines and tissues, especially normal liver, kidney, breast and colon.
<b>Function</b>	catalytic activity:ATP + a [protein]-L-tyrosine = ADP + a [protein]-L-tyrosine phosphate.,similarity:Belongs to the protein kinase superfamily. Tyr protein kinase family. SRC subfamily.,similarity:Contains 1 protein kinase domain.,similarity:Contains 1 SH2 domain.,similarity:Contains 1 SH3 domain.,tissue specificity:Restricted to cells lines derived from tissues of lymphoid, brain, breast, colon and bladder origin.,
<b>Background</b>	The protein encoded by this gene belongs to the TYR family of protein kinases. This tyrosine kinase is a nuclear protein and may function during G1 and S phase of the cell cycle and suppress growth. [provided by RefSeq, Jul 2008],

**Nanjing BYabscience technology Co.,Ltd**



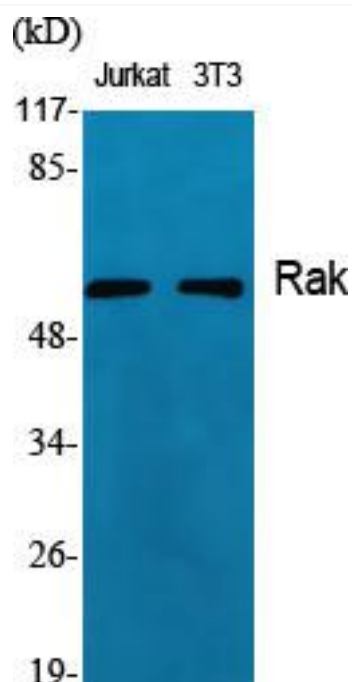
**matters needing attention**

Avoid repeated freezing and thawing!

**Usage suggestions**

This product can be used in immunological reaction related experiments. For more information, please consult technical personnel.

## Products Images



Western Blot analysis of various cells using Rak Monoclonal Antibody