



# PPP2R3C Monoclonal Antibody

<b>Catalog No</b>	BYmab-14956
<b>Isotype</b>	IgG
<b>Reactivity</b>	Human;Mouse;Rat
<b>Applications</b>	WB
<b>Gene Name</b>	PPP2R3C
<b>Protein Name</b>	Serine/threonine-protein phosphatase 2A regulatory subunit B" subunit gamma
<b>Immunogen</b>	The antiserum was produced against synthesized peptide derived from human PPP2R3C. AA range:165-214
<b>Specificity</b>	PPP2R3C Monoclonal Antibody detects endogenous levels of PPP2R3C protein.
<b>Formulation</b>	Liquid in PBS containing 50% glycerol, 0.5% BSA and 0.02% sodium azide.
<b>Source</b>	Monoclonal, Mouse,IgG
<b>Purification</b>	The antibody was affinity-purified from mouse antiserum by affinity-chromatography using epitope-specific immunogen.
<b>Dilution</b>	WB 1:500-2000
<b>Concentration</b>	1 mg/ml
<b>Purity</b>	≥90%
<b>Storage Stability</b>	-20°C/1 year
<b>Synonyms</b>	PPP2R3C; C14orf10; G5PR; Serine/threonine-protein phosphatase 2A regulatory subunit B" subunit gamma; Protein phosphatase subunit G5PR; Rhabdomyosarcoma antigen MU-RMS-40.6A/6C
<b>Observed Band</b>	55kD
<b>Cell Pathway</b>	Nucleus . Cytoplasm . Excluded from the nucleoli. Localization is cell cycle-dependent. Localizes to the cytoplasm during cytokinesis. .
<b>Tissue Specificity</b>	Ubiquitously expressed in brain and other tissues.
<b>Function</b>	developmental stage:Expressed in fetal brain.,function:May regulate MCM3AP phosphorylation through phosphatase recruitment. May play a role in the activation-induced cell death of B-cells.,similarity:Contains 2 EF-hand domains.,subcellular location:Excluded from the nucleoli. Localization is cell cycle-dependent. Localizes to the cytoplasm during cytokinesis.,subunit:Interacts with MCM3AP/GANP (By similarity). Interacts with PPP5C, and the phosphatase 2A core enzyme composed of the PPP2CA catalytic subunit and the constant regulatory subunit PPP2R1A.,tissue specificity:Ubiquitously expressed in brain and other tissues.,

**Nanjing BYabscience technology Co.,Ltd**



## Background

This gene encodes a regulatory subunit of the serine/threonine phosphatase, protein phosphatase 2. This protein is localized to both nuclear and cytoplasmic regions depending on cell cycle phase. Homozygous conditional knockout mice for this gene exhibit reduced numbers and impaired proliferation of immune system B cells. This protein may regulate the expression of the P-glycoprotein ATP-binding cassette transporter through its phosphatase activity. Alternative splicing results in multiple transcript variants. [provided by RefSeq, Feb 2015],

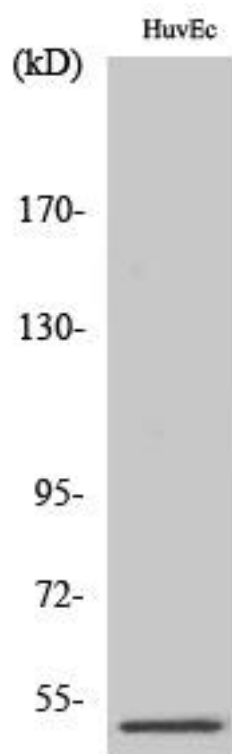
## matters needing attention

Avoid repeated freezing and thawing!

## Usage suggestions

This product can be used in immunological reaction related experiments. For more information, please consult technical personnel.

## Products Images



Western Blot analysis of various cells using PPP2R3C Monoclonal Antibody