



# PP2A-A $\beta$ Monoclonal Antibody

Catalog No	BYmab-14947
Isotype	IgG
Reactivity	Human;Mouse;Rat
Applications	WB
Gene Name	PPP2R1B
Protein Name	Serine/threonine-protein phosphatase 2A 65 kDa regulatory subunit A beta isoform
Immunogen	The antiserum was produced against synthesized peptide derived from human PPP2R1B. AA range:552-601
Specificity	PP2A-A $\beta$ Monoclonal Antibody detects endogenous levels of PP2A-A $\beta$ protein.
Formulation	Liquid in PBS containing 50% glycerol, 0.5% BSA and 0.02% sodium azide.
Source	Monoclonal, Mouse,IgG
Purification	The antibody was affinity-purified from mouse antiserum by affinity-chromatography using epitope-specific immunogen.
Dilution	WB 1:500-2000
Concentration	1 mg/ml
Purity	$\geq 90\%$
Storage Stability	-20°C/1 year
Synonyms	PPP2R1B; Serine/threonine-protein phosphatase 2A 65 kDa regulatory subunit A beta isoform; PP2A subunit A isoform PR65-beta; PP2A subunit A isoform R1-beta
Observed Band	66kD
Cell Pathway	membrane raft,extracellular exosome,
Tissue Specificity	Testis,
Function	disease:Defects in PPP2R1B might be a cause of some lung and colorectal cancers.,domain:Each HEAT repeat appears to consist of two alpha helices joined by a hydrophilic region, the intrarepeat loop. The repeat units may be arranged laterally to form a rod-like structure.,function:The PR65 subunit of protein phosphatase 2A serves as a scaffolding molecule to coordinate the assembly of the catalytic subunit and a variable regulatory B subunit.,sequence caution:Contaminating sequence. Sequence of unknown origin in the N-terminal part.,similarity:Belongs to the phosphatase 2A regulatory subunit A

Nanjing BYabscience technology Co.,Ltd



family.,similarity:Contains 15 HEAT repeats.,subunit:PP2A consists of a common heterodimeric core enzyme, composed of a 36 kDa catalytic subunit (subunit C) and a 65 kDa constant regulatory subunit (PR65 or subunit A), that associates with a variety of regulatory subunits. Proteins that associate wi

## Background

This gene encodes a constant regulatory subunit of protein phosphatase 2. Protein phosphatase 2 is one of the four major Ser/Thr phosphatases, and it is implicated in the negative control of cell growth and division. It consists of a common heteromeric core enzyme, which is composed of a catalytic subunit and a constant regulatory subunit, that associates with a variety of regulatory subunits. The constant regulatory subunit A serves as a scaffolding molecule to coordinate the assembly of the catalytic subunit and a variable regulatory B subunit. This gene encodes a beta isoform of the constant regulatory subunit A. Mutations in this gene have been associated with some lung and colon cancers. Alternatively spliced transcript variants have been described. [provided by RefSeq, Apr 2010],

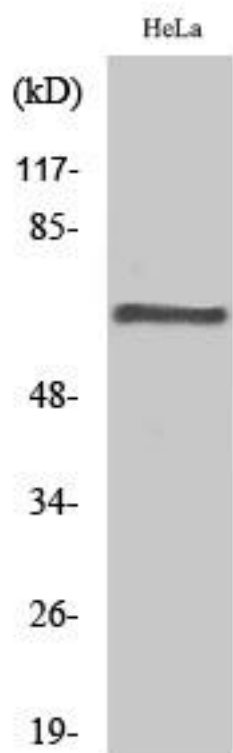
## matters needing attention

Avoid repeated freezing and thawing!

## Usage suggestions

This product can be used in immunological reaction related experiments. For more information, please consult technical personnel.

## Products Images



Western Blot analysis of various cells using PP2A-A  $\beta$  Monoclonal Antibody