



PLK-5 Monoclonal Antibody

Catalog No	BYmab-14945
Isotype	IgG
Reactivity	Human;Rat;Mouse;
Applications	WB
Gene Name	PLK5
Protein Name	Inactive serine/threonine-protein kinase PLK5
Immunogen	The antiserum was produced against synthesized peptide derived from human PLK5. AA range:131-180
Specificity	PLK-5 Monoclonal Antibody detects endogenous levels of PLK-5 protein.
Formulation	Liquid in PBS containing 50% glycerol, 0.5% BSA and 0.02% sodium azide.
Source	Monoclonal, Mouse,IgG
Purification	The antibody was affinity-purified from mouse antiserum by affinity-chromatography using epitope-specific immunogen.
Dilution	WB 1:500-2000
Concentration	1 mg/ml
Purity	≥90%
Storage Stability	-20°C/1 year
Synonyms	PLK5; PLK5P; FG060302; Inactive serine/threonine-protein kinase PLK5; Polo-like kinase 5; PLK-5
Observed Band	55kD
Cell Pathway	Nucleus, nucleolus . Cytoplasm .
Tissue Specificity	Expressed in the brain, neurons and glial cells. Also expressed in highly differentiated cells, such as the serous acini in the parotid gland, distal and proximal tubules of the kidney, tubules of the seminal gland, Kupffer cells and some hepatocytes in the liver, and some cells in the germinal center of lymph nodes (at protein level).
Function	
Background	PLK5 (Polo Like Kinase 5) is a Protein Coding gene. Gene Ontology (GO) annotations related to PLK5 include transferase activity, transferring phosphorus-containing groups and protein kinase activity. An important paralog of PLK5 is PLK4.

Nanjing BYabscience technology Co.,Ltd



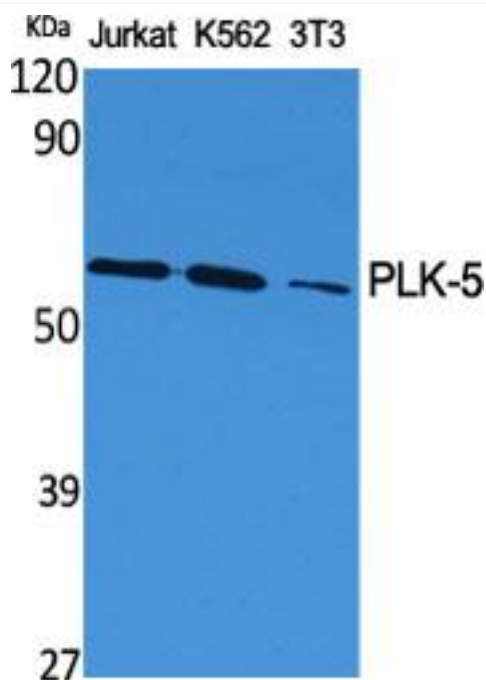
matters needing attention

Avoid repeated freezing and thawing!

Usage suggestions

This product can be used in immunological reaction related experiments. For more information, please consult technical personnel.

Products Images



Western Blot analysis of various cells using PLK-5 Monoclonal Antibody