



PKA β cat Monoclonal Antibody

Catalog No	BYmab-14929
Isotype	IgG
Reactivity	Human;Mouse;Rat
Applications	WB
Gene Name	PRKACB
Protein Name	cAMP-dependent protein kinase catalytic subunit beta
Immunogen	The antiserum was produced against synthesized peptide derived from human KAPCB. AA range:291-340
Specificity	PKA β cat Monoclonal Antibody detects endogenous levels of PKA β cat protein.
Formulation	Liquid in PBS containing 50% glycerol, 0.5% BSA and 0.02% sodium azide.
Source	Monoclonal, Mouse,IgG
Purification	The antibody was affinity-purified from mouse antiserum by affinity-chromatography using epitope-specific immunogen.
Dilution	WB 1:500-2000
Concentration	1 mg/ml
Purity	$\geq 90\%$
Storage Stability	-20°C/1 year
Synonyms	PRKACB; cAMP-dependent protein kinase catalytic subunit beta; PKA C-beta
Observed Band	53kD
Cell Pathway	Cytoplasm . Cell membrane . Membrane ; Lipid-anchor . Nucleus . Translocates into the nucleus (monomeric catalytic subunit). The inactive holoenzyme is found in the cytoplasm. .
Tissue Specificity	Isoform 1 is most abundant in the brain, with low level expression in kidney. Isoform 2 is predominantly expressed in thymus, spleen and kidney. Isoform 3 and isoform 4 are only expressed in the brain.
Function	catalytic activity:ATP + a protein = ADP + a phosphoprotein.,cofactor:Magnesium.,enzyme regulation:Activated by cAMP.,function:Mediates cAMP-dependent signaling triggered by receptor binding to GPCRs. PKA activation regulates diverse cellular processes such as cell proliferation, the cell cycle, differentiation and regulation of microtubule dynamics, chromatin condensation and decondensation, nuclear envelope disassembly and reassembly, as well as regulation of intracellular transport mechanisms and ion flux.,PTM:Asn-3 is partially deaminated to Asp giving rise to

Nanjing BYabscience technology Co.,Ltd



2 major isoelectric variants, called CB and CA respectively.,similarity:Belongs to the protein kinase superfamily.,similarity:Belongs to the protein kinase superfamily. AGC Ser/Thr protein kinase family. cAMP subfamily.,similarity:Contains 1 AGC-kinase C-terminal domain.,similarity:Contains 1 protein kinase domain.,subcellular

Background

The protein encoded by this gene is a member of the serine/threonine protein kinase family. The encoded protein is a catalytic subunit of cAMP (cyclic AMP)-dependent protein kinase, which mediates signalling through cAMP. cAMP signaling is important to a number of processes, including cell proliferation and differentiation. Multiple alternatively spliced transcript variants encoding distinct isoforms have been observed. [provided by RefSeq, Jul 2014],

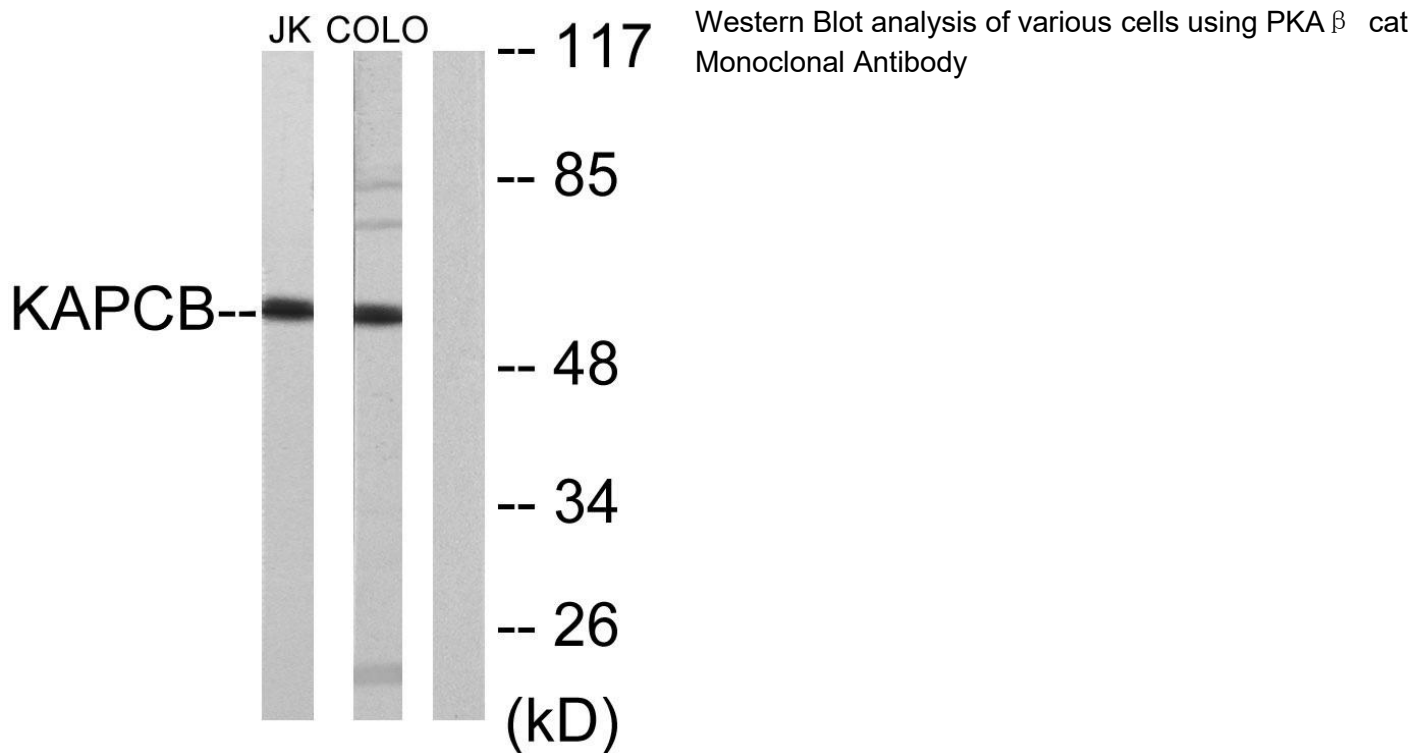
matters needing attention

Avoid repeated freezing and thawing!

Usage suggestions

This product can be used in immunological reaction related experiments. For more information, please consult technical personnel.

Products Images



Nanjing BYabscience technology Co.,Ltd